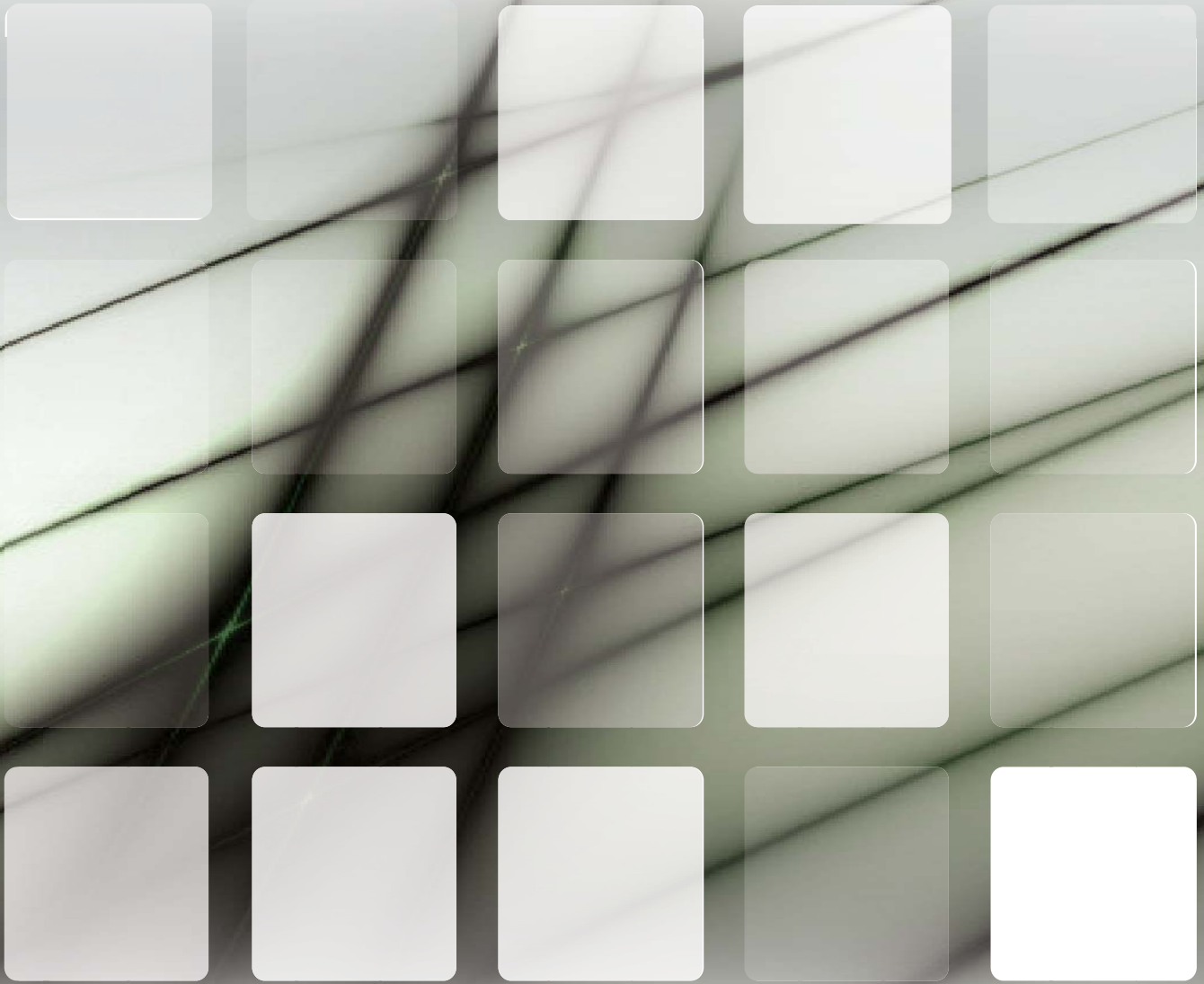


VECR Series

Round Flow VRF Cassette

Technical Manual

220~240V/1/50-60Hz



Four-way Cassette

1 Specifications	4
2 Dimensions	9
3 Unit Placement	11
4 Piping Diagram	13
5 Wiring Diagram	14
6 Capacity Tables.....	18
7 Electrical Characteristics.....	30
8 Sound Levels	31
9 Temperature and Airflow Distributions	33

VECR010Q0A-DWV028

VECR031Q0A-DWV090

VECR012Q0A-DWV036

VECR035Q0A-DWV100

VECR015Q0A-DWV045

VECR038Q0A-DWV112

VECR019Q0A-DWV056

VECR048Q0A-DWV140

VECR024Q0A-DWV071

VECR060Q0A-DWV160

VECR027Q0A-DWV080

1 Specifications

VECR010Q0A-DWV028 / VECR012Q0A-DWV036 / VECR015Q0A-DWV045

Table 1.1: Specifications

Model			VECR010Q0A-DWV028	VECR012Q0A-DWV036	VECR015Q0A-DWV045	
Power supply			1 phase, 220-240V, 50/60Hz			
Cooling ¹	Capacity	kW	2.8	3.6	4.5	
		kBtu/h	9.6	12.3	15.4	
	Power input	W	40	45	50	
Heating ²	Capacity	kW	3.2	4.0	5.0	
		kBtu/h	10.9	13.6	17.1	
	Power input	W	40	45	50	
Fan motor	Type	DC motor				
	Number	1				
Indoor coil	Number of rows		1		2	
	Tube pitch × row pitch	mm	21×13.37			
	Fin spacing	mm	1.5			
	Fin type		Hydrophilic aluminum			
	Tube OD and type	mm	Φ7 Inner-groove			
	Dimensions (L×H ×W)	mm	1930×168×13.37		1961×168×26.74	
	Number of circuits		4		8	
Air flow rate ³		m ³ /h	801/751/711/658/637/611/542		893/866/804/744/714/698/635	
Sound pressure level ⁴		dB(A)	32/31/30/28/28/26/23		35/34/31/31/30/28/26	
Main body	Net dimensions ⁵ (W×H×D)		mm 840×230×840			
	Packed dimensions (W×H×D)		mm 955×260×955			
	Net/Gross weight		kg 21.3/25.8		23.2/27.6	
Panel	Net dimensions (W×H×D)		mm 950×70×950			
	Packed dimensions (W×H×D)		mm 1035×89×1035			
	Net/Gross weight		kg 5.8/7.9			
Refrigerant type			R410A			
Design pressure (H/L)		MPa	4.4/2.6			
Pipe connections	Liquid/Gas pipe		mm Φ6.35/Φ12.7			
	Drain pipe		mm OD Φ32			

Notes:

- Indoor temperature 27°C DB, 19°C WB; outdoor temperature 35°C DB; equivalent refrigerant piping length 7.5m with zero level difference.
- Indoor temperature 20°C DB; outdoor temperature 7°C DB, 6°C WB; equivalent refrigerant piping length 7.5m with zero level difference.
- Air flow rate are from the highest speed to the lowest speed, total 7 rates for each model.
- Sound pressure level is from highest level to lowest level, total 7 levels for each model. Sound pressure level is measured 1.4m below the unit in a semi-anechoic chamber.
- Unit body dimensions given are the largest external dimensions of the unit, including hanger attachments.

VECR019Q0A-DWV056 / VECR024Q0A-DWV071 / VECR027Q0A-DWV080

Table 1.2: Specifications

Model			VECR019Q0A-DWV056	VECR024Q0A-DWV071	VECR027Q0A-DWV080
Power supply			1 phase, 220-240V, 50/60Hz		
Cooling ¹	Capacity	kW	5.6	7.1	8.0
		kBtu/h	19.1	24.2	27.3
	Power input	W	60	70	96
Heating ²	Capacity	kW	6.3	8.0	9.0
		kBtu/h	21.5	27.3	30.7
	Power input	W	60	70	96
Fan motor	Type		DC motor		
	Number		1		
Indoor coil	Number of rows		2		
	Tube pitch × row pitch	mm	21×13.37		
	Fin spacing	mm	1.5		
	Fin type		Hydrophilic aluminum		
	Tube OD and type	mm	Φ7 Inner-groove		
	Dimensions (L×H×W)	mm	1961×168×26.74		
	Number of circuits		8		
Air flow rate ³		m ³ /h	893/866/804/744/714/ 698/635	977/937/864/800/778/ 738/671	1203/1131/1064/977/ 912/840/774
Sound pressure level ⁴		dB(A)	35/34/31/31/30/28/26	35/35/34/31/30/28/27	36/35/34/31/31/29/28
Main body	Net dimensions ⁵ (W×H×D)		mm 840×230×840		
	Packed dimensions (W×H×D)		mm 955×260×955		
	Net/Gross weight		kg 23.2/27.6		
Panel	Net dimensions (W×H×D)		mm 950×70×950		
	Packed dimensions (W×H×D)		mm 1035×89×1035		
	Net/Gross weight		kg 5.8/7.9		
Refrigerant type			R410A		
Design pressure (H/L)		MPa	4.4/2.6		
Pipe connections	Liquid/Gas pipe		mm Φ9.53/Φ15.9		
	Drain pipe		mm OD Φ32		

Notes:

1. Indoor temperature 27°C DB, 19°C WB; outdoor temperature 35°C DB; equivalent refrigerant piping length 7.5m with zero level difference.
2. Indoor temperature 20°C DB; outdoor temperature 7°C DB, 6°C WB; equivalent refrigerant piping length 7.5m with zero level difference.
3. Air flow rate are from the highest speed to the lowest speed, total 7 rates for each model.
4. Sound pressure level is from highest level to lowest level, total 7 levels for each model. Sound pressure level is measured 1.4m below the unit in a semi-anechoic chamber.
5. Unit body dimensions given are the largest external dimensions of the unit, including hanger attachments.

VECR031Q0A-DWV090 / VECR035Q0A-DWV100

Table 1.3: Specifications

Model			VECR031Q0A-DWV090	VECR035Q0A-DWV100
Power supply			1 phase, 220-240V, 50/60Hz	
Cooling ¹	Capacity	kW	9.0	10.0
		kBtu/h	30.7	34.1
	Power input	W	100	150
Heating ²	Capacity	kW	10.0	11.0
		kBtu/h	34.1	37.5
	Power input	W	100	150
Fan motor	Type		DC motor	
	Number		1	
Indoor coil	Number of rows		2	2
	Tube pitch × row pitch	mm	21×13.37	
	Fin spacing	mm	1.5	
	Fin type		Hydrophilic aluminum	
	Tube OD and type	mm	Φ7 Inner-groove	
	Dimensions (L×H×W)	mm	1955×252×26.74	
	Number of circuits		12	
Air flow rate ³		m ³ /h	1349/1294/1230/1201/1111/1029/ 970	1700/1600/1440/1250/1200/1150 /1100
Sound pressure level ⁴		dB(A)	37/35/34/31/31/30/28	43/42/40/38/37/35/34
Main body	Net dimensions ⁵ (W×H×D)		840×300×840	
	Packed dimensions (W×H×D)		955×330×955	
	Net/Gross weight		28.4/33.8	
Panel	Net dimensions (W×H×D)		950×70×950	
	Packed dimensions (W×H×D)		1035×89×1035	
	Net/Gross weight		5.8/7.9	
Refrigerant type			R410A	
Design pressure (H/L)		MPa	4.4/2.6	
Pipe connections	Liquid/Gas pipe		Φ9.53/Φ15.9	
	Drain pipe		OD Φ32	

Notes:

- Indoor temperature 27°C DB, 19°C WB; outdoor temperature 35°C DB; equivalent refrigerant piping length 7.5m with zero level difference.
- Indoor temperature 20°C DB; outdoor temperature 7°C DB, 6°C WB; equivalent refrigerant piping length 7.5m with zero level difference.
- Air flow rate are from the highest speed to the lowest speed, total 7 rates for each model.
- Sound pressure level is from highest level to lowest level, total 7 levels for each model. Sound pressure level is measured 1.4m below the unit in a semi-anechoic chamber.
- Unit body dimensions given are the largest external dimensions of the unit, including hanger attachments.

VECR038Q0A-DWV112 / VECR048Q0A-DWV140

Table 1.4: Specifications

Model			VECR038Q0A-DWV112	VECR048Q0A-DWV140	
Power supply			1 phase, 220-240V, 50/60Hz		
Cooling ¹	Capacity	kW	11.2	14.0	
		kBtu/h	38.2	47.8	
	Power input	W	160	170	
Heating ²	Capacity	kW	12.5	16.0	
		kBtu/h	42.7	54.6	
	Power input	W	160	170	
Fan motor	Type	DC motor			
	Number	1			
Indoor coil	Number of rows		2	3	
	Tube pitch × row pitch	mm	21×13.37		
	Fin spacing	mm	1.5		
	Fin type		Hydrophilic aluminum		
	Tube OD and type	mm	Φ7 Inner-groove		
	Dimensions (L×H×W)	mm	1955×252×26.74	1955×252×40.11	
	Number of circuits		12	12	
Air flow rate ³		m ³ /h	1700/1600/1440/1250/1200/1150/1100	1800/1650/1500/1300/1250/1200/1150	
Sound pressure level ⁴		dB(A)	43/42/40/38/37/35/34	45/44/42/41/40/39/37	
Main body	Net dimensions ⁵ (W×H×D)		840×300×840		
	Packed dimensions (W×H×D)		955×330×955		
	Net/Gross weight		28.4/33.8	30.7/35.8	
Panel	Net dimensions (W×H×D)		950×70×950		
	Packed dimensions (W×H×D)		1035×89×1035		
	Net/Gross weight		5.8/7.9		
Refrigerant type			R410A		
Design pressure (H/L)		MPa	4.4/2.6		
Pipe connections	Liquid/Gas pipe		Φ9.53/Φ15.9		
	Drain pipe		OD Φ32		

Notes:

- Indoor temperature 27°C DB, 19°C WB; outdoor temperature 35°C DB; equivalent refrigerant piping length 7.5m with zero level difference.
- Indoor temperature 20°C DB; outdoor temperature 7°C DB, 6°C WB; equivalent refrigerant piping length 7.5m with zero level difference.
- Air flow rate are from the highest speed to the lowest speed, total 7 rates for each model.
- Sound pressure level is from highest level to lowest level, total 7 levels for each model. Sound pressure level is measured 1.4m below the unit in a semi-anechoic chamber.
- Unit body dimensions given are the largest external dimensions of the unit, including hanger attachments.

VECR060Q0A-DWV160

Table 1.5: VECR060Q0A-DWV160 specifications

Model			VECR060Q0A-DWV160
Power supply			1 phase, 220-240V, 50/60Hz
Cooling ¹	Capacity	kW	16.0
		kBtu/h	54.5
	Power input	W	170
Heating ²	Capacity	kW	18.0
		kBtu/h	61.3
	Power input	W	170
Fan motor	Type	DC motor	
	Number	1	
Indoor coil	Number of rows		3
	Tube pitch × row pitch	mm	21×13.37
	Fin spacing	mm	1.5
	Fin type		Hydrophilic aluminum
	Tube OD and type	mm	Φ7 Inner-groove
	Dimensions (L×H×W)	mm	2200×252×40.11
	Number of circuits		12
Air flow rate ³		m ³ /h	2100/1950/1800/1750/1600/1450/1350
Sound pressure level ⁴		dB(A)	46/44/42/41/39/38/37
Main body	Net dimensions ⁵ (W×H×D)		mm 950×300×950
	Packed dimensions (W×H×D)		mm 1050×335×1050
	Net/Gross weight		kg 35.3/41.2
Panel	Net dimensions (W×H×D)		mm 1050×55×1050
	Packed dimensions (W×H×D)		mm 1115×100×1115
	Net/Gross weight		kg 7.4/9.7
Refrigerant type			R410A
Design pressure (H/L)		MPa	4.4/2.6
Pipe connections	Liquid/Gas pipe		mm Φ9.53/Φ15.9
	Drain pipe		mm OD Φ32

Notes:

- Indoor temperature 27°C DB, 19°C WB; outdoor temperature 35°C DB; equivalent refrigerant piping length 7.5m with zero level difference.
- Indoor temperature 20°C DB; outdoor temperature 7°C DB, 6°C WB; equivalent refrigerant piping length 7.5m with zero level difference.
- Air flow rate are from the highest speed to the lowest speed, total 7 rates for each model.
- Sound pressure level is from highest level to lowest level, total 7 levels for each model. Sound pressure level is measured 1.4m below the unit in a semi-anechoic chamber.
- Unit body dimensions given are the largest external dimensions of the unit, including hanger attachments.

2 Dimensions

2.1 Unit Dimensions

Figure 2.1: VECR010(12,14,15,19,24,27,31,35,38,48)Q0A Four-way Cassette dimensions (unit: mm)

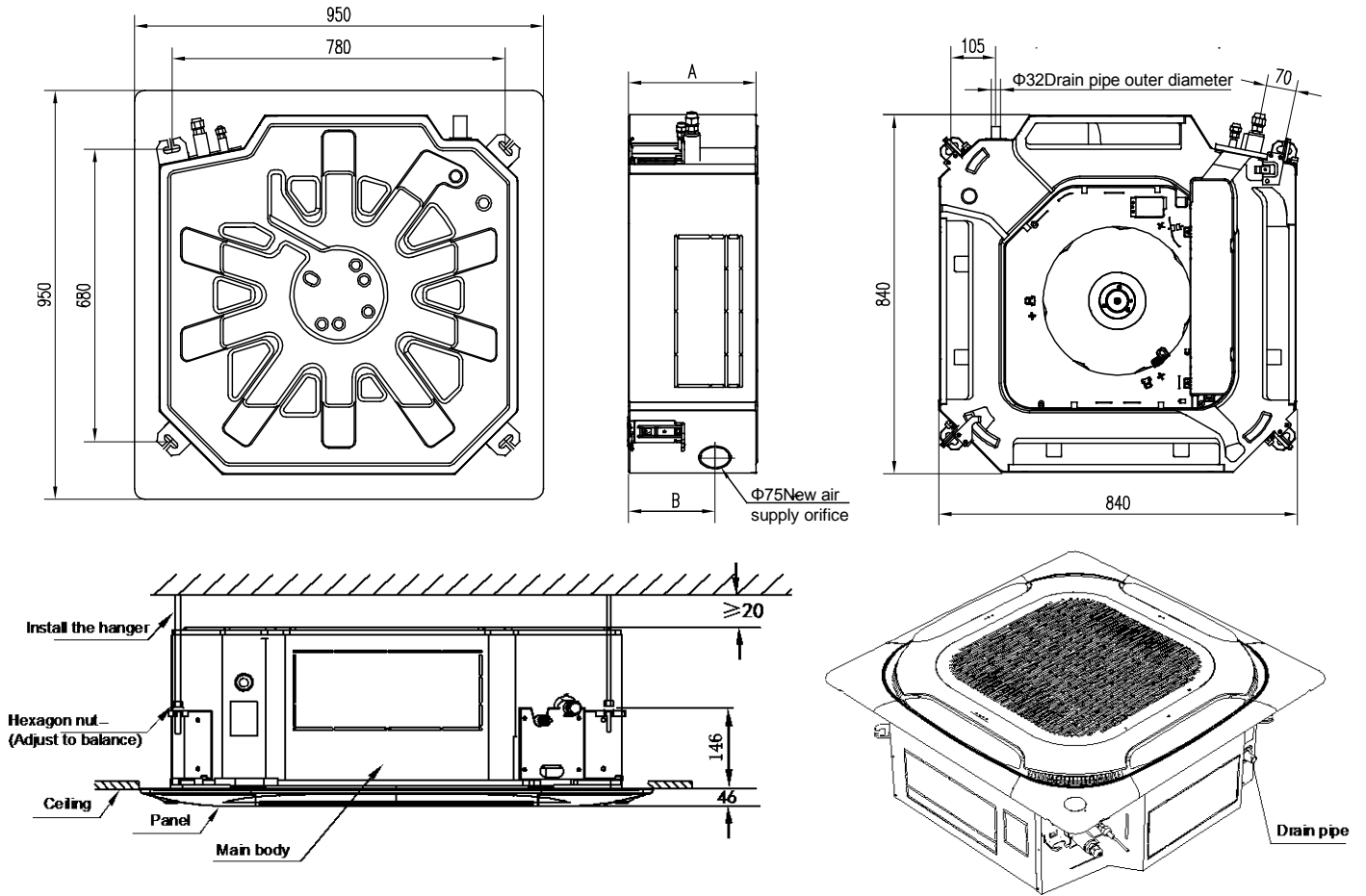


Figure 2.2: VECR060Q0A Four-way Cassette dimensions (unit: mm)

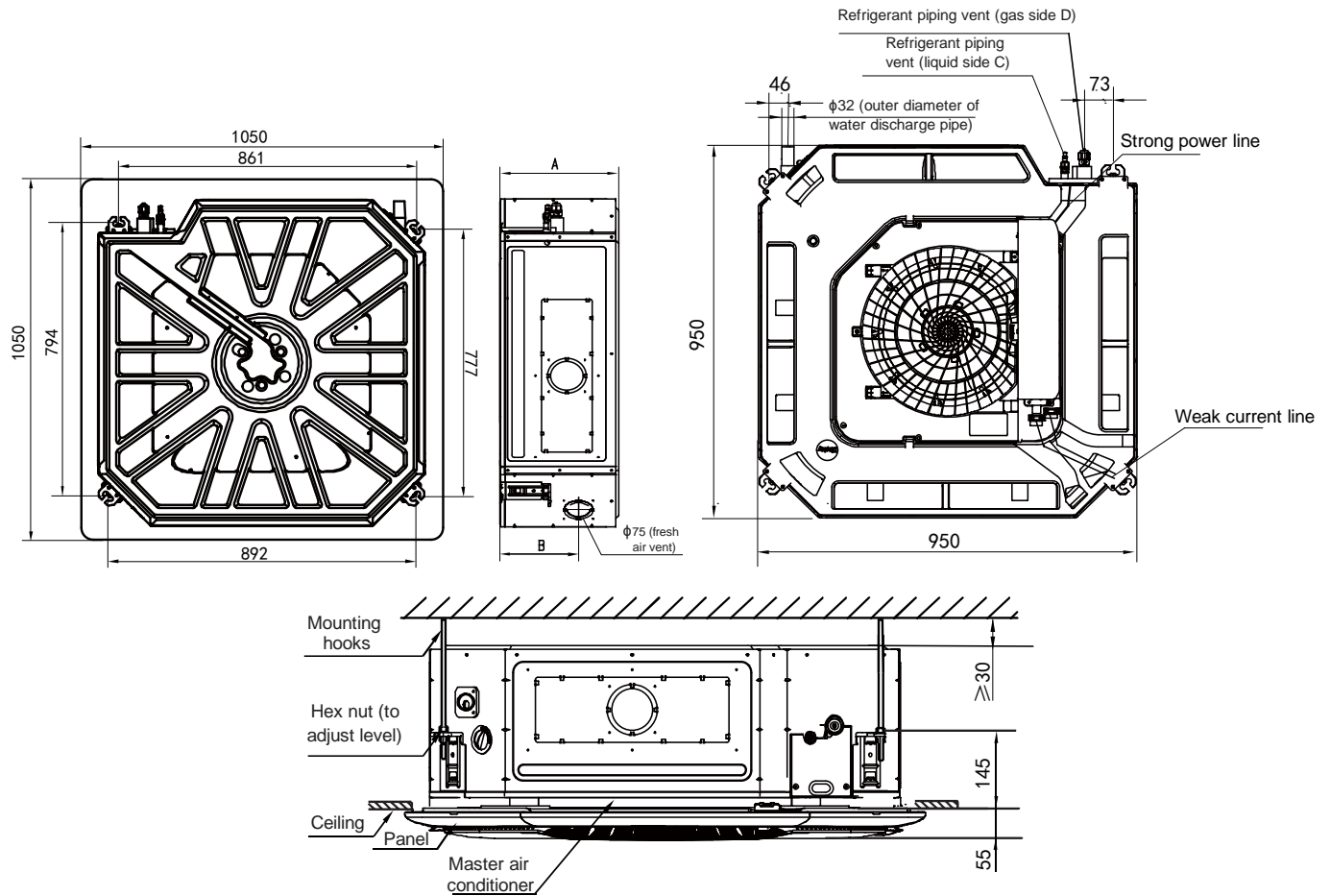


Table 2.1: Four-way Cassette dimensions

Model names	Dimensions (mm)	
	A	B
VECR010Q0A-DWV028	230	126
VECR012Q0A-DWV036		
VECR015Q0A-DWV045		
VECR019Q0A-DWV056		
VECR024Q0A-DWV071		
VECR027Q0A-DWV080		
VECR031Q0A-DWV090	300	197
VECR035Q0A-DWV100		
VECR038Q0A-DWV112		
VECR048Q0A-DWV140		
VECR060Q0A-DWV160		

Table 2.2: Four-way Cassette piping connections

Model names	Gas pipe (mm)	Liquid pipe (mm)
VECR010Q0A-DWV028	$\phi 12.7$	$\phi 6.35$
VECR012Q0A-DWV036		
VECR015Q0A-DWV045		
VECR019Q0A-DWV056	$\phi 15.9$	$\phi 9.53$
VECR024Q0A-DWV071		
VECR027Q0A-DWV080		
VECR031Q0A-DWV090		
VECR035Q0A-DWV100		
VECR038Q0A-DWV112		
VECR048Q0A-DWV140		
VECR060Q0A-DWV160		

3 Unit Placement

3.1 Placement Considerations

Unit placement should take account of the following considerations:

- Units should not be installed in the following locations:
 - Where exposure to direct radiation from a high-temperature heat source or to interference from a source of electromagnetic radiation may occur.
 - Where dust or dirt may affect heat exchangers.
 - Where exposure to oil or to corrosive or harmful gases, such as acidic or alkaline gases, may occur.
 - Where exposure to salinity may occur, such as seaside locations.
 - Where highly flammable materials are present.
 - Where exposure to oily air may occur, such as a kitchen.
 - Where exposure to very high humidity may occur, such as a laundry.
- Units should be installed in positions where:
 - The ceiling is horizontal and is able to bear the unit's weight.
 - There are no obstructions that could impede the airflow into and out of the unit.
 - The airflow out of the unit can reach throughout the room.
 - There is sufficient space for access during installation, servicing and maintenance.
 - The refrigerant piping and drain piping can be easily connected to the refrigerant piping and drain piping systems.
 - Short-circuit ventilation (where outlet air returns quickly to a unit's air inlet) will not occur.

3.2 Space Requirements

Figure 3.1: VECR010(12,14,15,19,24,27,31,35,38,48)Q0A Four-way Cassette space requirements (unit: mm)

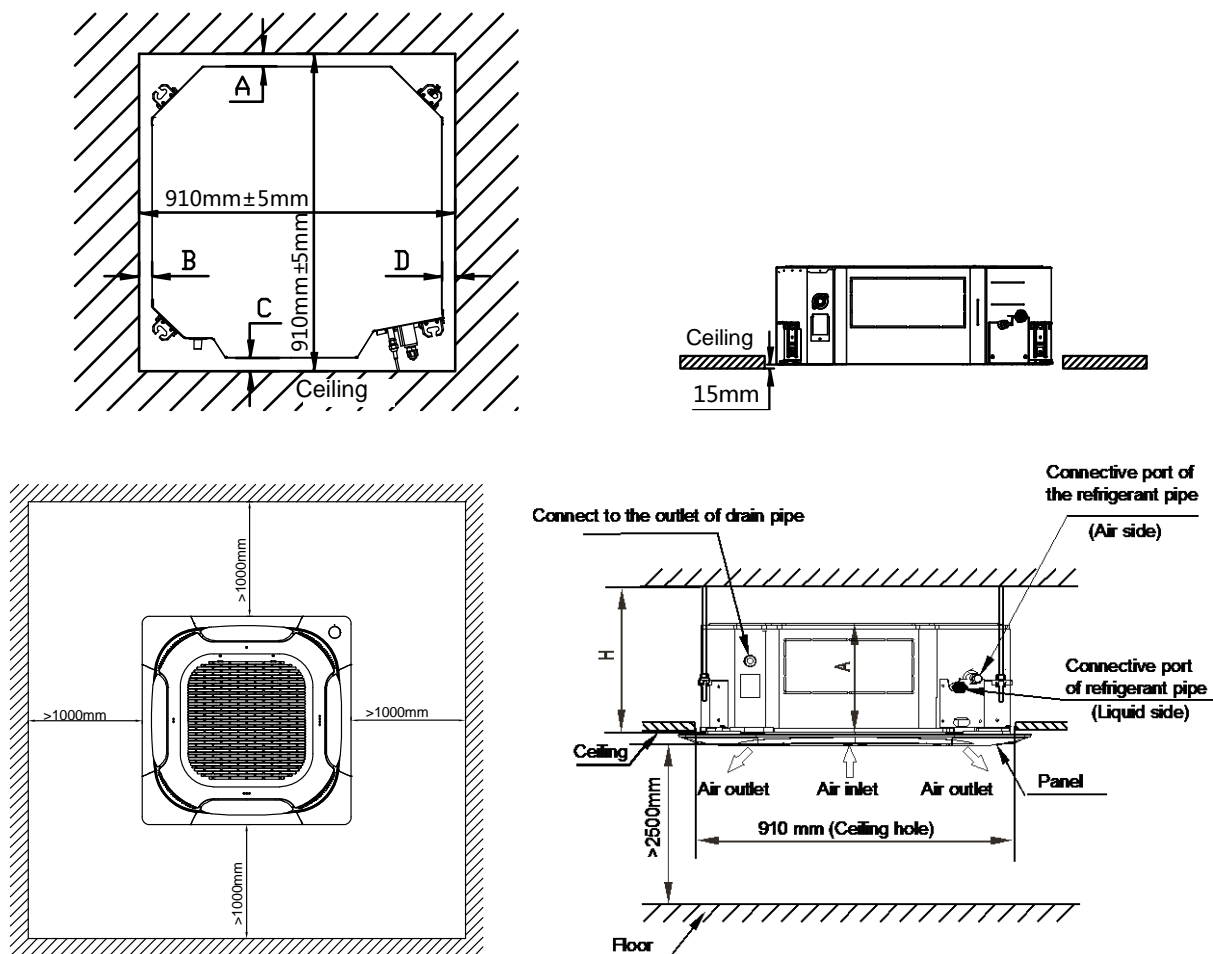


Figure 3.2: VECR060Q0A Four-way Cassette space requirements (unit: mm)

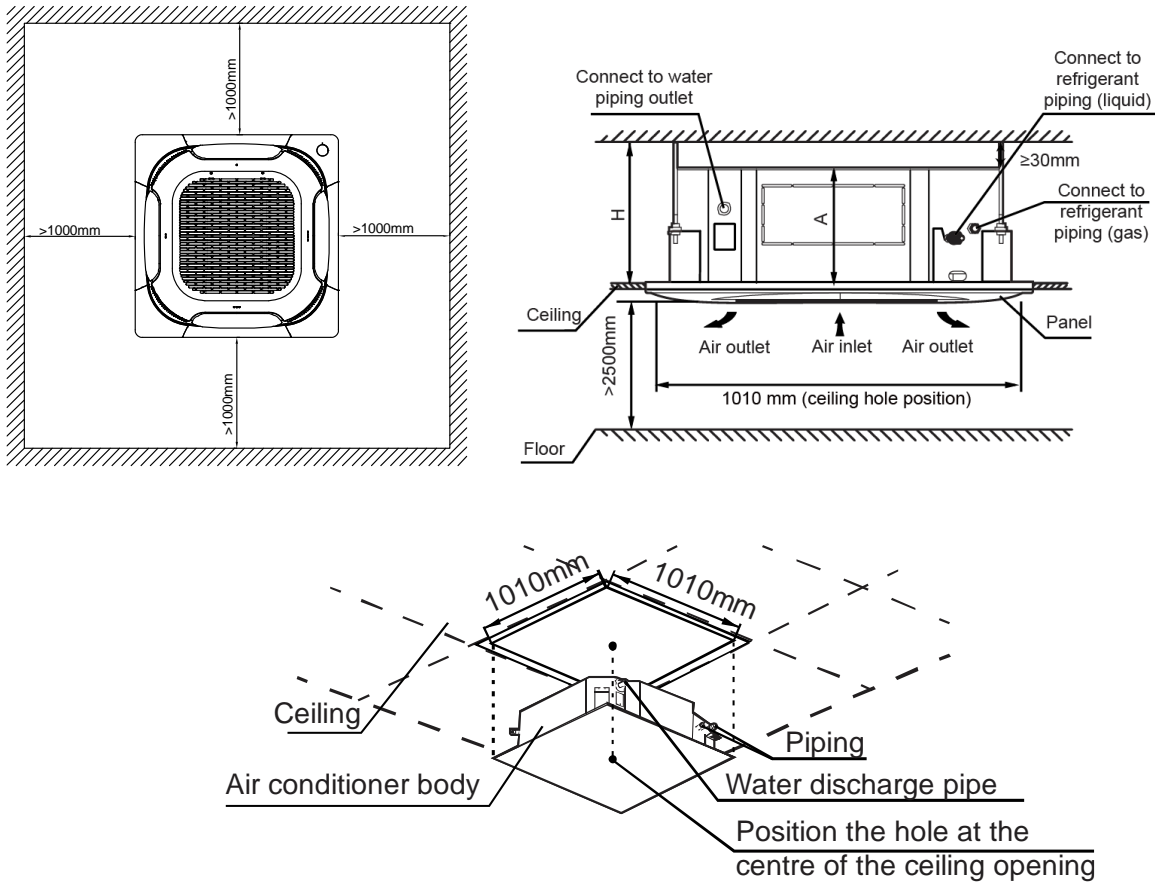
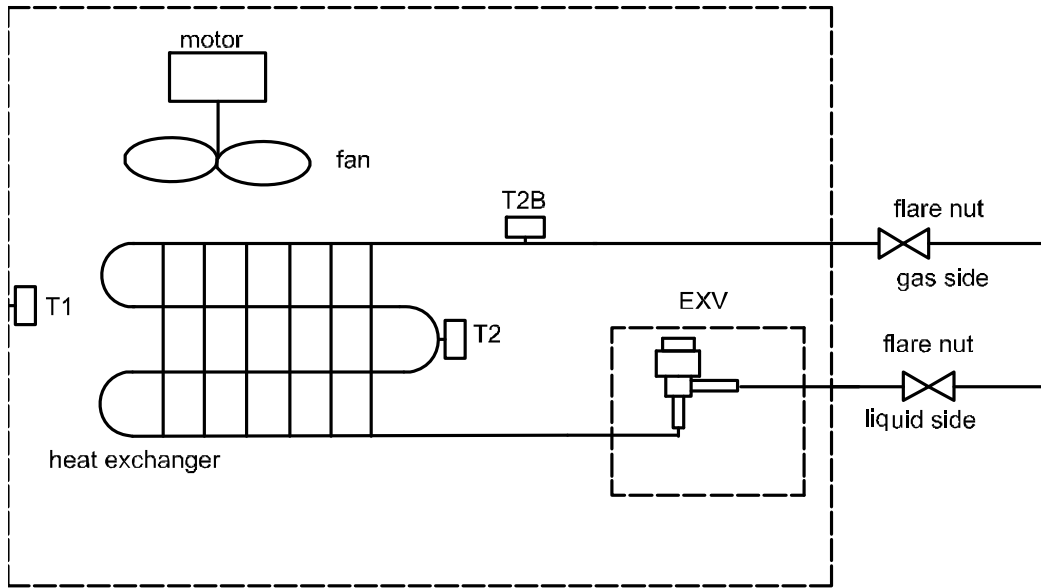


Table 3.1: Four-way Cassette dimensions and space requirements

Model name	Dimensions / Requirements (mm)	
	A	H
VECR010Q0A-DWV028 VECR012Q0A-DWV036 VECR015Q0A-DWV045 VECR019Q0A-DWV056 VECR024Q0A-DWV071 VECR027Q0A-DWV080	230	≥260
VECR031Q0A-DWV090 VECR035Q0A-DWV100 VECR038Q0A-DWV112 VECR048Q0A-DWV140 VECR060Q0A-DWV160	300	≥330

4 Piping Diagram

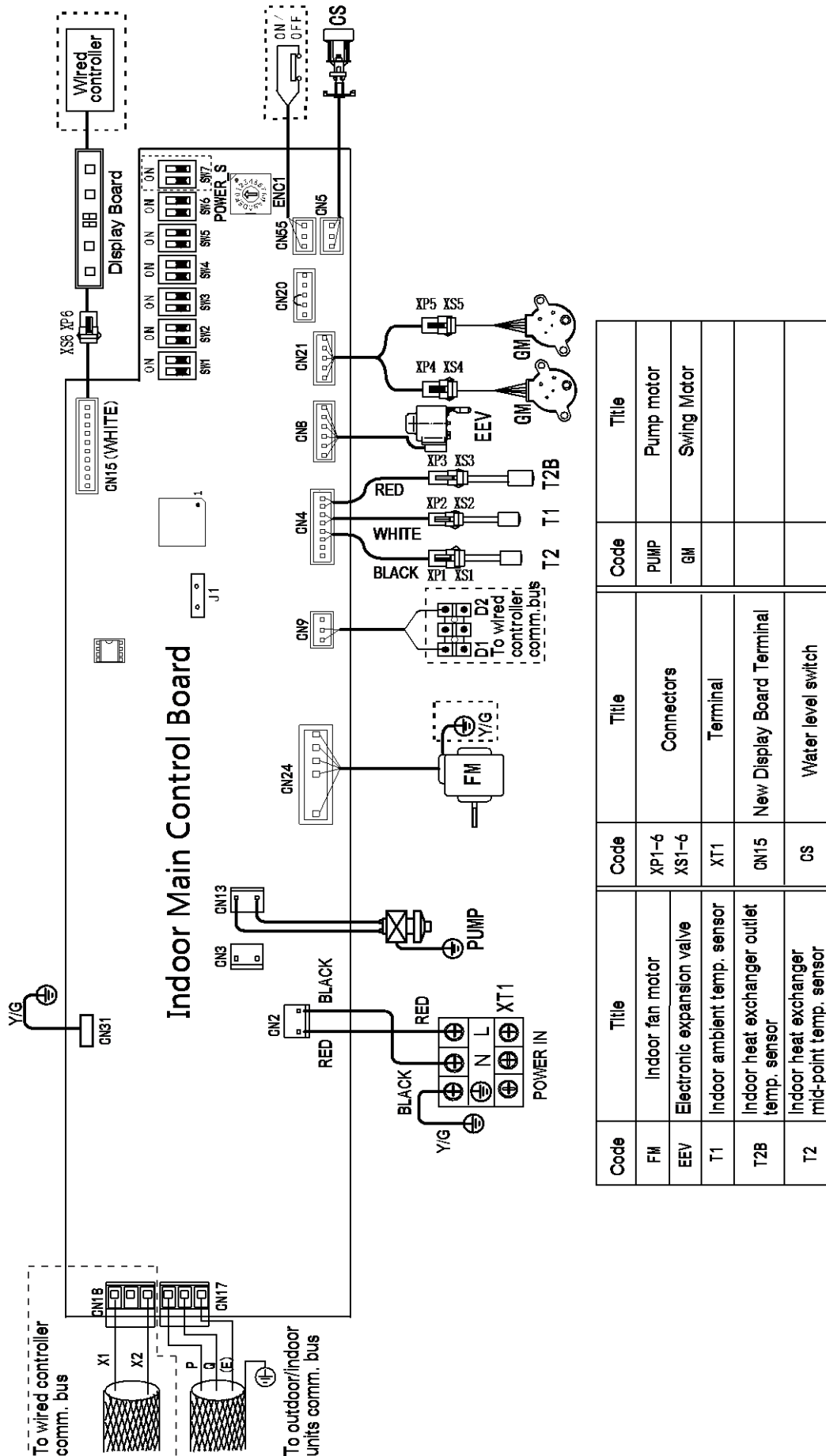
Figure 4.1: Four-way Cassette piping diagram



Legend	
T1	Indoor ambient temperature sensor
T2	Indoor heat exchanger mid-point temperature sensor
T2B	Indoor heat exchanger outlet temperature sensor

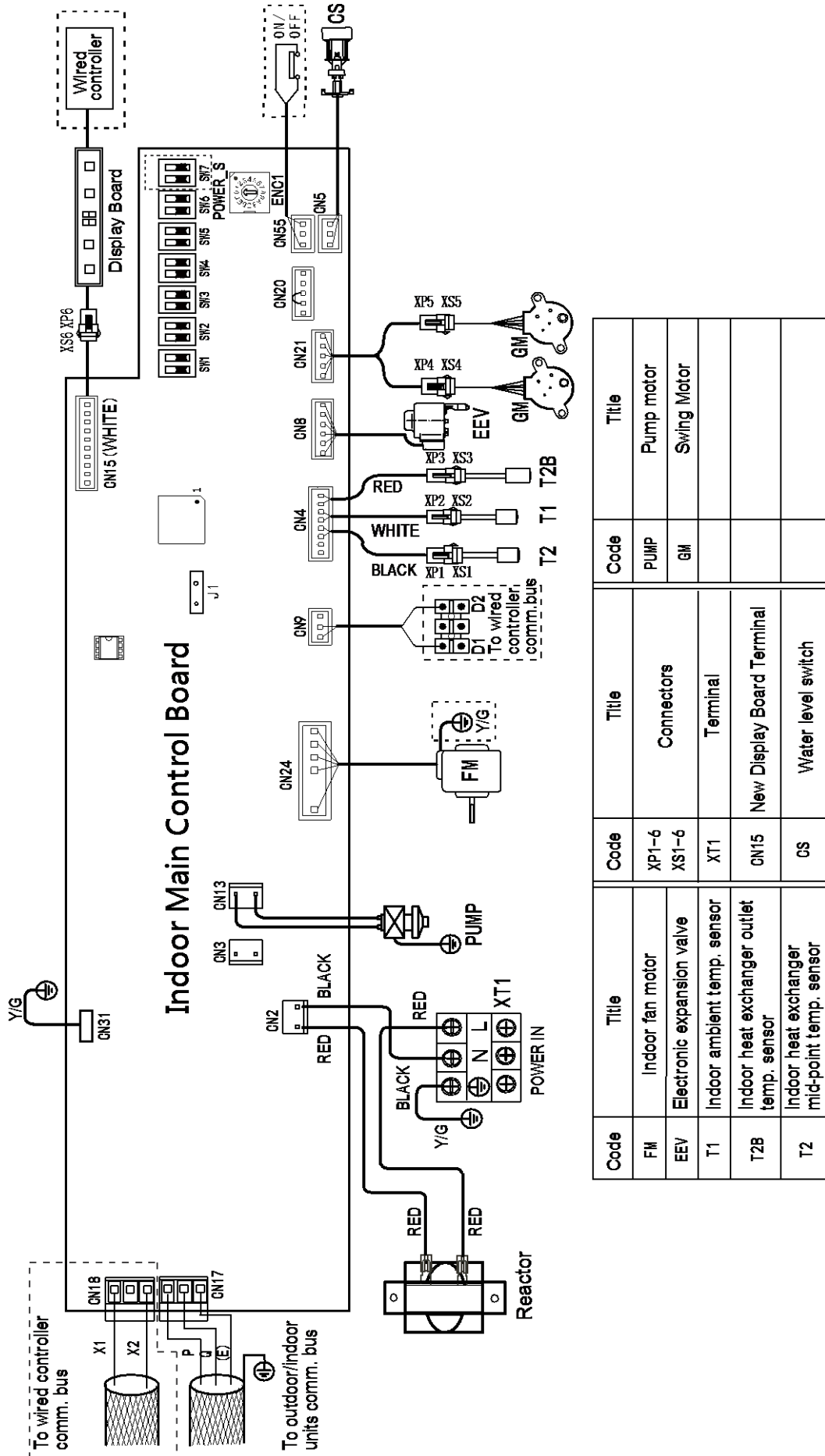
5 Wiring Diagram

Figure 5.1: VECR010(012,015,019,024,027)Q0A



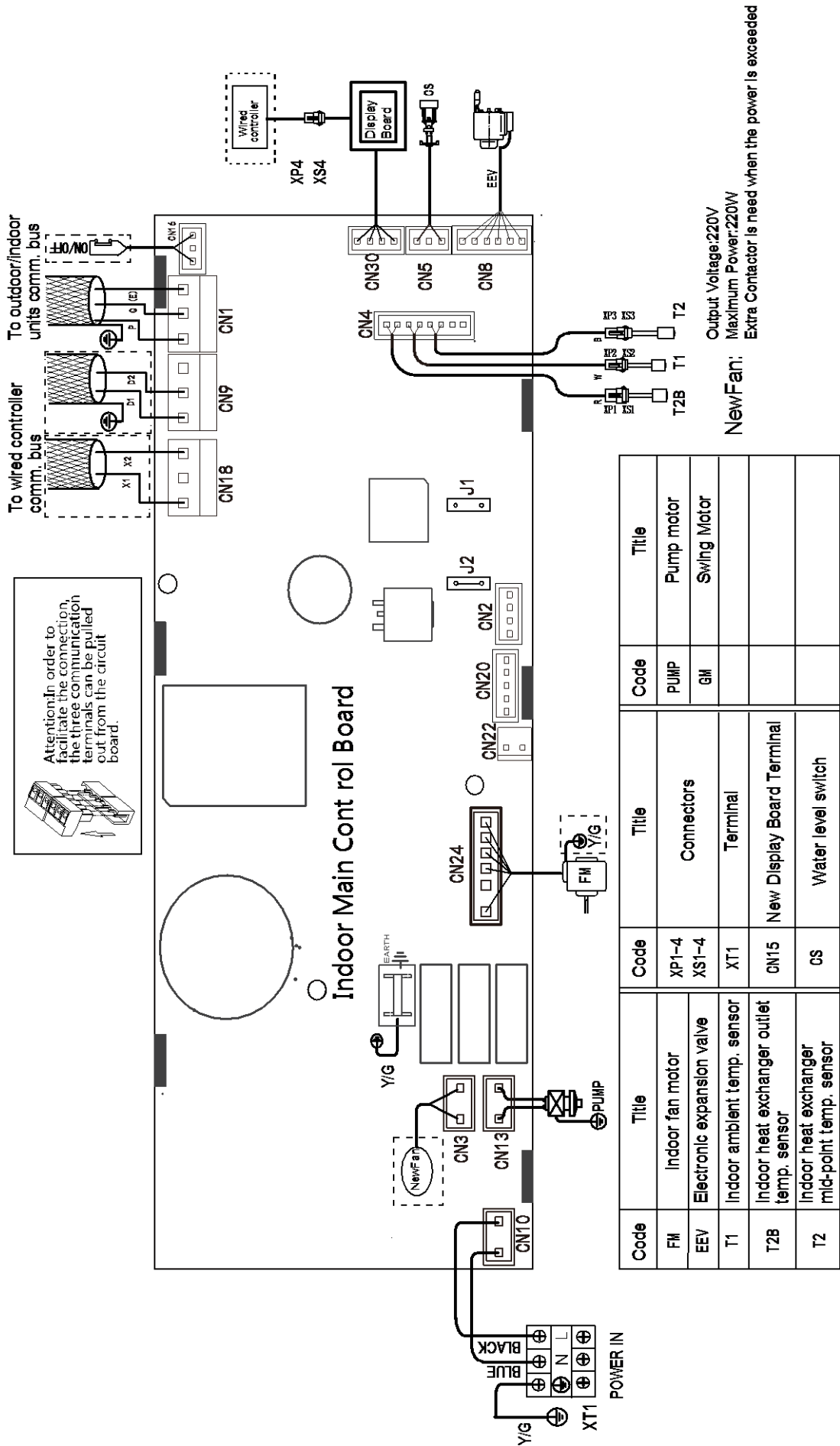
Code	Title	Code	Title	Code	Title
FM	Indoor fan motor	XP1-6	Connectors	PUMP	Pump motor
EEV	Electronic expansion valve	XS1-6		GM	Swing Motor
T1	Indoor ambient temp. sensor	XT1	Terminal		
T2B	Indoor heat exchanger outlet temp. sensor	GN15	New Display Board Terminal		
T2	Indoor heat exchanger mic-point temp. sensor	CS	Water level switch		

Figure 5.2: VECR031(035,038,048)Q0A



Code	Title	Code	Title	Code	Title
FM	Indoor fan motor	XP1-6	Connectors		
EEV	Electronic expansion valve	XS1-6			
T1	Indoor ambient temp. sensor	XT1	Terminal		
T2B	Indoor heat exchanger outlet temp. sensor	CN15	New Display Board Terminal		
T2	Indoor heat exchanger mid-point temp. sensor	CS	Water level switch		

Figure 5.3: VECR060Q0A



Caution

- All installation, servicing and maintenance must be carried out by competent and suitably qualified, certified and accredited professionals and in accordance with all applicable legislation.
- Units should be grounded in accordance with all applicable legislation. Metal and other conductive components should be insulated in accordance with all applicable legislation.
- Power supply wiring should be securely fastened at the power supply terminals – loose power supply wiring would represent a fire risk.
- After installation, servicing or maintenance, the electric control box cover should be closed. Failing to close the electric control box cover risks fire or electric shock.
- Switch ENC1 (indoor unit capacity setting) is factory-set and its setting should normally not be changed. The only circumstances in which a switch ENC1 might need to be set in the field is when replacing a main PCB. When replacing a main PCB, ensure that the capacity setting on switch ENC1 on the new PCB is consistent with the unit capacity given on the unit's nameplate.

6 Capacity Tables

6.1 Cooling Capacity Table

Table 6.1: Four-way Cassette cooling capacity

Capacity (kW)	Outdoor air temperature (°C DB)	Indoor air temperature (°C WB/DB)													
		14/20		16/23		18/26		19/27		20/28		22/30		24/32	
		TC	SC	TC	SC	TC	SC	TC	SC	TC	SC	TC	SC	TC	SC
		kW	kW	kW	kW	kW	kW	kW	kW	kW	kW	kW	kW	kW	kW
2.8	10.0	1.9	1.6	2.3	1.8	2.6	1.9	2.8	1.9	3.0	1.9	3.3	2.0	3.7	2.0
	12.0	1.9	1.6	2.3	1.8	2.6	1.9	2.8	1.9	3.0	1.9	3.3	2.0	3.6	2.0
	14.0	1.9	1.6	2.3	1.8	2.6	1.9	2.8	1.9	3.0	1.9	3.3	2.0	3.6	2.0
	16.0	1.9	1.6	2.3	1.8	2.6	1.9	2.8	1.9	3.0	1.9	3.3	2.0	3.5	1.9
	18.0	1.9	1.6	2.3	1.8	2.6	1.9	2.8	1.9	3.0	1.9	3.3	2.0	3.5	1.9
	20.0	1.9	1.6	2.3	1.8	2.6	1.9	2.8	1.9	3.0	1.9	3.3	2.0	3.4	1.9
	21.0	1.9	1.6	2.3	1.8	2.6	1.9	2.8	1.9	3.0	1.9	3.3	2.0	3.4	1.9
	23.0	1.9	1.6	2.3	1.8	2.6	1.9	2.8	1.9	3.0	1.9	3.3	2.0	3.4	1.9
	25.0	1.9	1.6	2.3	1.8	2.6	1.9	2.8	1.9	3.0	1.9	3.2	1.9	3.3	1.9
	27.0	1.9	1.6	2.3	1.8	2.6	1.9	2.8	1.9	3.0	1.9	3.2	1.9	3.3	1.9
	29.0	1.9	1.6	2.3	1.8	2.6	1.9	2.8	1.9	3.0	1.9	3.1	1.8	3.2	1.8
	31.0	1.9	1.6	2.3	1.8	2.6	1.9	2.8	1.9	3.0	1.9	3.1	1.8	3.2	1.7
	33.0	1.9	1.6	2.3	1.8	2.6	1.9	2.8	1.9	3.0	1.9	3.1	1.8	3.1	1.7
	35.0	1.9	1.6	2.3	1.8	2.6	1.9	2.8	1.9	2.9	1.9	3.0	1.8	3.1	1.7
	37.0	1.9	1.6	2.3	1.8	2.6	1.9	2.8	1.9	2.9	1.9	3.0	1.8	3.0	1.7
	39.0	1.9	1.6	2.3	1.8	2.6	1.9	2.8	1.9	2.9	1.9	3.0	1.9	3.0	1.7
	42.0	1.9	1.6	2.3	1.8	2.6	1.9	2.8	1.9	2.9	1.9	3.0	1.9	3.0	1.7
44.0	1.9	1.6	2.3	1.8	2.6	1.9	2.8	1.9	2.9	1.9	3.0	1.9	3.0	1.7	
46.0	1.9	1.6	2.3	1.8	2.6	1.9	2.8	1.9	2.9	1.9	3.0	1.9	3.0	1.7	
3.6	10.0	2.5	1.9	2.9	2.1	3.4	2.3	3.6	2.4	3.8	2.5	4.3	2.4	4.7	2.5
	12.0	2.5	1.9	2.9	2.1	3.4	2.3	3.6	2.4	3.8	2.5	4.3	2.4	4.7	2.5
	14.0	2.5	1.9	2.9	2.1	3.4	2.3	3.6	2.4	3.8	2.5	4.3	2.4	4.6	2.4
	16.0	2.5	1.9	2.9	2.1	3.4	2.3	3.6	2.4	3.8	2.5	4.3	2.4	4.5	2.4
	18.0	2.5	1.9	2.9	2.1	3.4	2.3	3.6	2.4	3.8	2.5	4.3	2.4	4.5	2.4
	20.0	2.5	1.9	2.9	2.1	3.4	2.3	3.6	2.4	3.8	2.5	4.3	2.4	4.4	2.3
	21.0	2.5	1.9	2.9	2.1	3.4	2.3	3.6	2.4	3.8	2.5	4.3	2.4	4.4	2.3
	23.0	2.5	1.9	2.9	2.1	3.4	2.3	3.6	2.4	3.8	2.5	4.1	2.3	4.3	2.2
	25.0	2.5	1.9	2.9	2.1	3.4	2.3	3.6	2.4	3.8	2.5	4.1	2.3	4.2	2.2
	27.0	2.5	1.9	2.9	2.1	3.4	2.3	3.6	2.4	3.8	2.5	4.0	2.2	4.2	2.2
	29.0	2.5	1.9	2.9	2.1	3.4	2.3	3.6	2.4	3.8	2.5	4.0	2.2	4.1	2.2
	31.0	2.5	1.9	2.9	2.1	3.4	2.3	3.6	2.4	3.8	2.5	4.2	2.6	4.1	2.2
	33.0	2.5	1.9	2.9	2.1	3.4	2.3	3.6	2.4	3.8	2.5	4.2	2.6	3.9	2.1
	35.0	2.5	1.9	2.9	2.1	3.4	2.3	3.6	2.4	3.8	2.5	4.2	2.6	3.9	2.1
	37.0	2.5	1.9	2.9	2.1	3.4	2.3	3.6	2.4	3.7	2.4	3.8	2.3	3.9	2.1
	39.0	2.5	1.9	2.9	2.1	3.4	2.3	3.6	2.4	3.7	2.4	3.8	2.3	3.8	2.1
	42.0	2.5	1.9	2.9	2.1	3.4	2.3	3.6	2.4	3.7	2.4	3.8	2.3	3.8	2.1
44.0	2.5	1.9	2.9	2.1	3.4	2.3	3.6	2.4	3.7	2.4	3.8	2.3	3.8	2.1	
46.0	2.5	1.9	2.9	2.1	3.4	2.3	3.6	2.4	3.7	2.4	3.8	2.3	3.8	2.1	

Abbreviations:

TC: Total capacity

SC: Sensible capacity

Notes:

1. Shaded cells indicate rating condition.

Table continued on next page ...

Table 6.1: Four-way Cassette cooling capacity (continued)

Capacity (kW)	Outdoor air temperature (°C DB)	Indoor air temperature (°C WB/DB)													
		14/20		16/23		18/26		19/27		20/28		22/30		24/32	
		TC	SC	TC	SC	TC	SC	TC	SC	TC	SC	TC	SC	TC	SC
		kW	kW	kW	kW	kW	kW	kW	kW	kW	kW	kW	kW	kW	kW
4.5	10.0	3.1	2.4	3.7	2.6	4.2	2.8	4.5	2.9	4.8	3.0	5.3	3.4	5.9	3.0
	12.0	3.1	2.4	3.7	2.6	4.2	2.8	4.5	2.9	4.8	3.0	5.3	3.4	5.9	3.0
	14.0	3.1	2.4	3.7	2.6	4.2	2.8	4.5	2.9	4.8	3.0	5.3	3.4	5.8	3.0
	16.0	3.1	2.4	3.7	2.6	4.2	2.8	4.5	2.9	4.8	3.0	5.3	3.4	5.6	2.9
	18.0	3.1	2.4	3.7	2.6	4.2	2.8	4.5	2.9	4.8	3.0	5.3	3.4	5.7	3.0
	20.0	3.1	2.4	3.7	2.6	4.2	2.8	4.5	2.9	4.8	3.0	5.3	3.4	5.7	3.0
	21.0	3.1	2.4	3.7	2.6	4.2	2.8	4.5	2.9	4.8	3.0	5.3	3.4	5.6	3.0
	23.0	3.1	2.4	3.7	2.6	4.2	2.8	4.5	2.9	4.8	3.0	5.3	3.4	5.5	3.0
	25.0	3.1	2.4	3.7	2.6	4.2	2.8	4.5	2.9	4.8	3.0	5.2	3.0	5.4	2.9
	27.0	3.1	2.4	3.7	2.6	4.2	2.8	4.5	2.9	4.8	3.0	5.1	3.0	5.2	2.8
	29.0	3.1	2.4	3.7	2.6	4.2	2.8	4.5	2.9	4.8	3.0	5.1	2.9	5.2	2.8
	31.0	3.1	2.4	3.7	2.6	4.2	2.8	4.5	2.9	4.8	3.0	5.0	2.9	5.1	2.7
	33.0	3.1	2.4	3.7	2.6	4.2	2.8	4.5	2.9	4.8	3.0	4.9	2.8	5.1	2.7
	35.0	3.1	2.4	3.7	2.6	4.2	2.8	4.5	2.9	4.8	3.0	4.8	2.8	5.0	2.7
	37.0	3.1	2.4	3.7	2.6	4.2	2.8	4.5	2.9	4.8	3.0	4.8	2.9	4.9	2.6
	39.0	3.1	2.4	3.7	2.6	4.2	2.8	4.5	2.9	4.6	2.8	4.7	2.8	4.8	2.6
	42.0	3.1	2.4	3.7	2.6	4.2	2.8	4.5	2.9	4.6	2.8	4.7	2.8	4.8	2.6
44.0	3.1	2.4	3.7	2.6	4.2	2.8	4.5	2.9	4.6	2.8	4.7	2.8	4.8	2.6	
46.0	3.1	2.4	3.7	2.6	4.2	2.8	4.5	2.9	4.6	2.8	4.7	3.1	4.8	2.6	
5.6	10.0	3.9	2.7	4.6	3.0	5.3	3.3	5.6	3.4	5.9	3.5	6.6	3.6	7.3	3.5
	12.0	3.9	2.7	4.6	3.0	5.3	3.3	5.6	3.4	5.9	3.5	6.6	3.6	7.2	3.5
	14.0	3.9	2.7	4.6	3.0	5.3	3.3	5.6	3.4	5.9	3.5	6.6	3.6	7.1	3.5
	16.0	3.9	2.7	4.6	3.0	5.3	3.3	5.6	3.4	5.9	3.5	6.6	3.6	7.0	3.4
	18.0	3.9	2.7	4.6	3.0	5.3	3.3	5.6	3.4	5.9	3.5	6.6	3.6	6.8	3.4
	20.0	3.9	2.7	4.6	3.0	5.3	3.3	5.6	3.4	5.9	3.5	6.6	3.6	6.7	3.3
	21.0	3.9	2.7	4.6	3.0	5.3	3.3	5.6	3.4	5.9	3.5	6.6	3.6	6.6	3.3
	23.0	3.9	2.7	4.6	3.0	5.3	3.3	5.6	3.4	5.9	3.5	6.6	3.6	6.6	3.3
	25.0	3.9	2.7	4.6	3.0	5.3	3.3	5.6	3.4	5.9	3.5	6.6	3.6	6.5	3.2
	27.0	3.9	2.7	4.6	3.0	5.3	3.3	5.6	3.4	5.9	3.5	6.4	3.5	6.4	3.2
	29.0	3.9	2.7	4.6	3.0	5.3	3.3	5.6	3.4	5.9	3.5	6.3	3.5	6.4	3.3
	31.0	3.9	2.7	4.6	3.0	5.3	3.3	5.6	3.4	5.9	3.5	6.2	3.4	6.2	3.2
	33.0	3.9	2.7	4.6	3.0	5.3	3.3	5.6	3.4	5.9	3.5	6.2	3.4	6.2	3.2
	35.0	3.9	2.7	4.6	3.0	5.3	3.3	5.6	3.4	5.9	3.5	6.0	3.3	6.0	3.1
	37.0	3.9	2.7	4.6	3.0	5.3	3.3	5.6	3.4	5.9	3.5	5.9	3.2	6.0	3.1
	39.0	3.9	2.7	4.6	3.0	5.3	3.3	5.6	3.4	5.7	3.4	5.8	3.2	6.0	3.1
	42.0	3.9	2.7	4.6	3.0	5.3	3.3	5.6	3.4	5.7	3.4	5.8	3.2	6.0	3.1
44.0	3.9	2.7	4.6	3.0	5.3	3.3	5.6	3.4	5.7	3.4	5.8	3.2	6.0	3.1	
46.0	3.9	2.7	4.6	3.0	5.3	3.3	5.6	3.4	5.7	3.7	5.8	3.2	6.0	3.1	

Abbreviations:
 TC: Total capacity
 SC: Sensible capacity

Notes:

1. Shaded cells indicate rating condition.

Table continued on next page ...

Table 6.1: Four-way Cassette cooling capacity (continued)

Capacity (kW)	Outdoor air temperature (°C DB)	Indoor air temperature (°C WB/DB)													
		14/20		16/23		18/26		19/27		20/28		22/30		24/32	
		TC	SC	TC	SC	TC	SC	TC	SC	TC	SC	TC	SC	TC	SC
		kW	kW	kW	kW	kW	kW	kW	kW	kW	kW	kW	kW	kW	kW
7.1	10.0	4.9	3.6	5.8	4.0	6.7	4.3	7.1	4.5	7.5	4.4	8.4	4.5	9.2	4.6
	12.0	4.9	3.6	5.8	4.0	6.7	4.3	7.1	4.5	7.5	4.4	8.4	4.5	9.1	4.5
	14.0	4.9	3.6	5.8	4.0	6.7	4.3	7.1	4.5	7.5	4.4	8.4	4.5	9.0	4.5
	16.0	4.9	3.6	5.8	4.0	6.7	4.3	7.1	4.5	7.5	4.4	8.4	4.5	8.9	4.4
	18.0	4.9	3.6	5.8	4.0	6.7	4.3	7.1	4.5	7.5	4.4	8.4	4.5	8.7	4.3
	20.0	4.9	3.6	5.8	4.0	6.7	4.3	7.1	4.5	7.5	4.4	8.4	4.5	8.5	4.2
	21.0	4.9	3.6	5.8	4.0	6.7	4.3	7.1	4.5	7.5	4.4	8.4	4.5	8.4	4.2
	23.0	4.9	3.6	5.8	4.0	6.7	4.3	7.1	4.5	7.5	4.4	8.4	4.5	8.3	4.1
	25.0	4.9	3.6	5.8	4.0	6.7	4.3	7.1	4.5	7.5	4.4	8.4	4.5	8.2	4.1
	27.0	4.9	3.6	5.8	4.0	6.7	4.3	7.1	4.5	7.5	4.4	8.1	4.3	8.2	4.1
	29.0	4.9	3.6	5.8	4.0	6.7	4.3	7.1	4.5	7.5	4.5	8.0	4.3	8.1	4.1
	31.0	4.9	3.6	5.8	4.0	6.7	4.3	7.1	4.5	7.5	4.5	7.9	4.3	7.8	4.0
	33.0	4.9	3.6	5.8	4.0	6.7	4.3	7.1	4.5	7.5	4.5	7.8	4.2	7.8	4.0
	35.0	4.9	3.6	5.8	4.0	6.7	4.3	7.1	4.5	7.5	4.5	7.6	4.1	7.7	3.9
	37.0	4.9	3.6	5.8	4.0	6.7	4.3	7.1	4.5	7.4	4.4	7.5	4.1	7.6	4.0
	39.0	4.9	3.6	5.8	4.0	6.7	4.3	7.1	4.5	7.2	4.3	7.4	4.1	7.6	4.0
	42.0	4.9	3.6	5.8	4.0	6.7	4.3	7.1	4.5	7.2	4.3	7.4	4.1	7.6	4.0
44.0	4.9	3.6	5.8	4.0	6.7	4.3	7.1	4.5	7.2	4.3	7.4	4.1	7.6	4.0	
46.0	4.9	3.6	5.8	4.0	6.7	4.3	7.1	4.5	7.2	4.3	7.4	4.1	7.6	4.0	
8.0	10.0	5.5	4.4	6.6	4.9	7.5	5.3	8.0	5.5	8.4	5.4	9.4	5.5	10.4	5.6
	12.0	5.5	4.4	6.6	4.9	7.5	5.3	8.0	5.5	8.4	5.4	9.4	5.5	10.2	5.5
	14.0	5.5	4.4	6.6	4.9	7.5	5.3	8.0	5.5	8.4	5.4	9.4	5.5	10.2	5.5
	16.0	5.5	4.4	6.6	4.9	7.5	5.3	8.0	5.5	8.4	5.4	9.4	5.5	10.0	5.4
	18.0	5.5	4.4	6.6	4.9	7.5	5.3	8.0	5.5	8.4	5.4	9.4	5.5	9.8	5.3
	20.0	5.5	4.4	6.6	4.9	7.5	5.3	8.0	5.5	8.4	5.4	9.4	5.5	9.6	5.2
	21.0	5.5	4.4	6.6	4.9	7.5	5.3	8.0	5.5	8.4	5.4	9.4	5.5	9.4	5.1
	23.0	5.5	4.4	6.6	4.9	7.5	5.3	8.0	5.5	8.4	5.4	9.4	5.5	9.4	5.1
	25.0	5.5	4.4	6.6	4.9	7.5	5.3	8.0	5.5	8.4	5.4	9.4	5.5	9.3	5.0
	27.0	5.5	4.4	6.6	4.9	7.5	5.3	8.0	5.5	8.4	5.4	9.1	5.3	9.2	5.1
	29.0	5.5	4.4	6.6	4.9	7.5	5.3	8.0	5.5	8.4	5.5	9.0	5.3	9.1	5.0
	31.0	5.5	4.4	6.6	4.9	7.5	5.3	8.0	5.5	8.4	5.5	8.9	5.2	8.8	4.8
	33.0	5.5	4.4	6.6	4.9	7.5	5.3	8.0	5.5	8.4	5.5	8.8	5.2	8.8	4.8
	35.0	5.5	4.4	6.6	4.9	7.5	5.3	8.0	5.5	8.4	5.5	8.6	5.1	8.6	4.8
	37.0	5.5	4.4	6.6	4.9	7.5	5.3	8.0	5.5	8.3	5.4	8.4	5.0	8.6	4.9
	39.0	5.5	4.4	6.6	4.9	7.5	5.3	8.0	5.5	8.1	5.3	8.3	5.0	8.6	4.9
	42.0	5.5	4.4	6.6	4.9	7.5	5.3	8.0	5.5	8.1	5.3	8.3	5.0	8.6	4.9
44.0	5.5	4.4	6.6	4.9	7.5	5.3	8.0	5.5	8.1	5.3	8.3	5.0	8.6	4.9	
46.0	5.5	4.4	6.6	4.9	7.5	5.3	8.0	5.5	8.1	5.3	8.3	5.0	8.6	4.9	

Abbreviations:
 TC: Total capacity
 SC: Sensible capacity

Notes:

1. Shaded cells indicate rating condition.

Table continued on next page ...

Table 6.1: Four-way Cassette cooling capacity (continued)

Capacity (kW)	Outdoor air temperature (°C DB)	Indoor air temperature (°C WB/DB)													
		14/20		16/23		18/26		19/27		20/28		22/30		24/32	
		TC	SC	TC	SC	TC	SC	TC	SC	TC	SC	TC	SC	TC	SC
		kW	kW	kW	kW	kW	kW	kW	kW	kW	kW	kW	kW	kW	kW
9.0	10.0	6.2	4.9	7.3	5.3	8.4	5.8	9.0	5.9	9.6	6.0	10.6	6.1	11.7	6.0
	12.0	6.2	4.9	7.3	5.3	8.4	5.8	9.0	5.9	9.6	6.0	10.6	6.1	11.5	5.9
	14.0	6.2	4.9	7.3	5.3	8.4	5.8	9.0	5.9	9.6	6.0	10.6	6.1	11.4	5.9
	16.0	6.2	4.9	7.3	5.3	8.4	5.8	9.0	5.9	9.6	6.0	10.6	6.1	11.3	5.8
	18.0	6.2	4.9	7.3	5.3	8.4	5.8	9.0	5.9	9.6	6.0	10.6	6.1	11.0	5.8
	20.0	6.2	4.9	7.3	5.3	8.4	5.8	9.0	5.9	9.6	6.0	10.6	6.1	10.8	5.7
	21.0	6.2	4.9	7.3	5.3	8.4	5.8	9.0	5.9	9.6	6.0	10.6	6.1	10.6	5.6
	23.0	6.2	4.9	7.3	5.3	8.4	5.8	9.0	5.9	9.6	6.0	10.6	6.1	10.5	5.5
	25.0	6.2	4.9	7.3	5.3	8.4	5.8	9.0	5.9	9.6	6.0	10.6	6.1	10.4	5.5
	27.0	6.2	4.9	7.3	5.3	8.4	5.8	9.0	5.9	9.6	6.0	10.3	5.9	10.4	5.4
	29.0	6.2	4.9	7.3	5.3	8.4	5.8	9.0	5.9	9.6	6.0	10.1	5.7	10.3	5.4
	31.0	6.2	4.9	7.3	5.3	8.4	5.8	9.0	5.9	9.6	6.0	10.0	5.7	9.9	5.3
	33.0	6.2	4.9	7.3	5.3	8.4	5.8	9.0	5.9	9.6	6.0	9.9	5.6	9.9	5.3
	35.0	6.2	4.9	7.3	5.3	8.4	5.8	9.0	5.9	9.5	6.0	9.6	5.5	9.7	5.3
	37.0	6.2	4.9	7.3	5.3	8.4	5.8	9.0	5.9	9.3	5.8	9.5	5.4	9.6	5.3
	39.0	6.2	4.9	7.3	5.3	8.4	5.8	9.0	5.9	9.2	5.7	9.4	5.3	9.6	5.3
	42.0	6.2	4.9	7.3	5.3	8.4	5.8	9.0	5.9	9.2	5.7	9.4	5.3	9.6	5.3
44.0	6.2	4.9	7.3	5.3	8.4	5.8	9.0	5.9	9.2	5.7	9.4	5.3	9.6	5.3	
46.0	6.2	4.9	7.3	5.3	8.4	5.8	9.0	5.9	9.2	5.7	9.4	5.3	9.6	5.3	
10.0	10.0	6.9	5.6	8.1	6.2	9.4	6.9	10.0	7.0	10.6	7.0	11.9	7.3	13.0	7.3
	12.0	6.9	5.6	8.1	6.2	9.4	6.9	10.0	7.0	10.6	7.0	11.9	7.3	12.8	7.2
	14.0	6.9	5.6	8.1	6.2	9.4	6.9	10.0	7.0	10.6	7.0	11.9	7.3	12.7	7.1
	16.0	6.9	5.6	8.1	6.2	9.4	6.9	10.0	7.0	10.6	7.0	11.9	7.3	12.5	7.0
	18.0	6.9	5.6	8.1	6.2	9.4	6.9	10.0	7.0	10.6	7.0	11.9	7.3	12.2	6.8
	20.0	6.9	5.6	8.1	6.2	9.4	6.9	10.0	7.0	10.6	7.0	11.9	7.3	12.0	6.7
	21.0	6.9	5.6	8.1	6.2	9.4	6.9	10.0	7.0	10.6	7.0	11.9	7.3	11.8	6.6
	23.0	6.9	5.6	8.1	6.2	9.4	6.9	10.0	7.0	10.6	7.0	11.7	7.3	11.7	6.6
	25.0	6.9	5.6	8.1	6.2	9.4	6.9	10.0	7.0	10.6	7.0	11.6	7.2	11.6	6.5
	27.0	6.9	5.6	8.1	6.2	9.4	6.9	10.0	7.0	10.6	7.0	11.5	7.1	11.5	6.6
	29.0	6.9	5.6	8.1	6.2	9.4	6.9	10.0	7.0	10.6	7.0	11.4	7.1	11.4	6.5
	31.0	6.9	5.6	8.1	6.2	9.4	6.9	10.0	7.0	10.6	7.0	11.3	7.0	11.0	6.3
	33.0	6.9	5.6	8.1	6.2	9.4	6.9	10.0	7.0	10.6	7.0	11.2	6.9	11.0	6.3
	35.0	6.9	5.6	8.1	6.2	9.4	6.9	10.0	7.0	10.5	6.9	10.8	6.7	10.8	6.3
	37.0	6.9	5.6	8.1	6.2	9.4	6.9	10.0	7.0	10.4	6.9	10.8	6.7	10.7	6.2
	39.0	6.9	5.6	8.1	6.2	9.4	6.9	10.0	7.0	10.2	6.7	10.4	6.6	10.7	6.3
	42.0	6.9	5.6	8.1	6.2	9.4	6.9	10.0	7.0	10.2	6.7	10.4	6.6	10.7	6.3
44.0	6.9	5.6	8.1	6.2	9.4	6.9	10.0	7.0	10.2	6.7	10.4	6.6	10.7	6.3	
46.0	6.9	5.6	8.1	6.2	9.4	6.9	10.0	7.0	10.2	6.7	10.4	6.6	10.7	6.3	

Abbreviations:
 TC: Total capacity
 SC: Sensible capacity

Notes:

1. Shaded cells indicate rating condition.

Table continued on next page ...

Table 6.1: Four-way Cassette cooling capacity (continued)

Capacity (kW)	Outdoor air temperature (°C DB)	Indoor air temperature (°C WB/DB)													
		14/20		16/23		18/26		19/27		20/28		22/30		24/32	
		TC	SC	TC	SC	TC	SC	TC	SC	TC	SC	TC	SC	TC	SC
		kW	kW	kW	kW	kW	kW	kW	kW	kW	kW	kW	kW	kW	kW
11.2	10.0	7.7	5.9	9.1	6.5	10.5	7.1	11.2	7.2	11.9	7.4	13.3	7.6	15.5	8.2
	12.0	7.7	5.9	9.1	6.5	10.5	7.1	11.2	7.2	11.9	7.4	13.3	7.6	14.4	7.7
	14.0	7.7	5.9	9.1	6.5	10.5	7.1	11.2	7.2	11.9	7.4	13.3	7.6	14.2	7.6
	16.0	7.7	5.9	9.1	6.5	10.5	7.1	11.2	7.2	11.9	7.4	13.3	7.6	14.1	7.5
	18.0	7.7	5.9	9.1	6.5	10.5	7.1	11.2	7.2	11.9	7.4	13.3	7.6	14.0	7.5
	20.0	7.7	5.9	9.1	6.5	10.5	7.1	11.2	7.2	11.9	7.4	13.3	7.6	13.9	7.4
	21.0	7.7	5.9	9.1	6.5	10.5	7.1	11.2	7.2	11.9	7.4	13.3	7.6	13.8	7.4
	23.0	7.7	5.9	9.1	6.5	10.5	7.1	11.2	7.2	11.9	7.4	13.1	7.5	13.7	7.3
	25.0	7.7	5.9	9.1	6.5	10.5	7.1	11.2	7.2	11.9	7.4	13.0	7.4	13.6	7.2
	27.0	7.7	5.9	9.1	6.5	10.5	7.1	11.2	7.2	11.9	7.4	12.9	7.3	13.4	7.2
	29.0	7.7	5.9	9.1	6.5	10.5	7.1	11.2	7.2	11.9	7.4	12.8	7.3	13.3	7.2
	31.0	7.7	5.9	9.1	6.5	10.5	7.1	11.2	7.2	11.9	7.4	12.7	7.2	12.8	6.9
	33.0	7.7	5.9	9.1	6.5	10.5	7.1	11.2	7.2	11.9	7.4	12.5	7.2	12.5	6.8
	35.0	7.7	5.9	9.1	6.5	10.5	7.1	11.2	7.2	11.8	7.4	12.4	7.1	12.3	6.7
	37.0	7.7	5.9	9.1	6.5	10.5	7.1	11.2	7.2	11.6	7.3	12.3	7.0	12.1	6.6
	39.0	7.7	5.9	9.1	6.5	10.5	7.1	11.2	7.2	11.4	7.1	12.2	7.0	11.9	6.6
	42.0	7.7	6.0	9.1	6.6	10.4	7.2	11.2	7.3	11.4	7.1	11.6	6.6	12.0	6.6
44.0	7.7	6.0	9.1	6.6	10.4	7.2	11.2	7.3	11.4	7.1	11.6	6.6	12.0	6.6	
46.0	7.7	6.0	9.1	6.6	10.4	7.2	11.2	7.3	11.4	7.1	11.6	6.6	12.0	6.6	
14.0	10.0	9.7	7.2	11.3	7.9	13.2	8.8	14.0	9.0	14.8	9.0	16.7	9.3	18.2	9.4
	12.0	9.7	7.2	11.3	7.9	13.2	8.8	14.0	9.0	14.8	9.0	16.7	9.3	17.9	9.2
	14.0	9.7	7.2	11.3	7.9	13.2	8.8	14.0	9.0	14.8	9.0	16.7	9.3	17.8	9.2
	16.0	9.7	7.2	11.3	7.9	13.2	8.8	14.0	9.0	14.8	9.0	16.7	9.3	17.5	9.0
	18.0	9.7	7.2	11.3	7.9	13.2	8.8	14.0	9.0	14.8	9.0	16.7	9.3	17.1	8.8
	20.0	9.7	7.2	11.3	7.9	13.2	8.8	14.0	9.0	14.8	9.0	16.7	9.3	16.8	8.7
	21.0	9.7	7.2	11.3	7.9	13.2	8.8	14.0	9.0	14.8	9.0	16.7	9.3	16.5	8.5
	23.0	9.7	7.2	11.3	7.9	13.2	8.8	14.0	9.0	14.8	9.0	16.4	9.3	16.4	8.4
	25.0	9.7	7.2	11.3	7.9	13.2	8.8	14.0	9.0	14.8	9.0	16.2	9.3	16.2	8.4
	27.0	9.7	7.2	11.3	7.9	13.2	8.8	14.0	9.0	14.8	9.0	16.1	9.2	16.1	8.4
	29.0	9.7	7.2	11.3	7.9	13.2	8.8	14.0	9.0	14.8	9.0	16.0	9.1	16.0	8.4
	31.0	9.7	7.2	11.3	7.9	13.2	8.8	14.0	9.0	14.8	9.0	15.8	9.0	15.4	8.1
	33.0	9.7	7.2	11.3	7.9	13.2	8.8	14.0	9.0	14.8	9.0	15.7	8.9	15.4	8.1
	35.0	9.7	7.2	11.3	7.9	13.2	8.8	14.0	9.0	14.7	8.9	15.1	8.6	15.1	8.1
	37.0	9.7	7.2	11.3	7.9	13.2	8.8	14.0	9.0	14.6	8.8	15.1	8.6	15.0	8.0
	39.0	9.7	7.2	11.3	7.9	13.2	8.8	14.0	9.0	14.3	8.7	14.6	8.4	15.0	8.1
	42.0	9.7	7.2	11.3	7.9	13.2	8.8	14.0	9.0	14.3	8.7	14.6	8.4	15.0	8.1
44.0	9.7	7.2	11.3	7.9	13.2	8.8	14.0	9.0	14.3	8.7	14.6	8.4	15.0	8.1	
46.0	9.7	7.2	11.3	7.9	13.2	8.8	14.0	9.0	14.3	8.7	14.6	8.4	15.0	8.1	

Abbreviations:
 TC: Total capacity
 SC: Sensible capacity

Notes:

1. Shaded cells indicate rating condition.

Table continued on next page ...

Table 6.1: Four-way Cassette cooling capacity (continued)

Capacity (kW)	Outdoor air temperature (°C DB)	Indoor air temperature (°C WB/DB)													
		14/20		16/23		18/26		19/27		20/28		22/30		24/32	
		TC	SC	TC	SC	TC	SC	TC	SC	TC	SC	TC	SC	TC	SC
		kW	kW	kW	kW	kW	kW	kW	kW	kW	kW	kW	kW	kW	kW
16.0	10.0	11.1	9.5	12.9	10.5	15.1	11.5	16.0	12.0	16.9	12.5	19.1	12.0	20.9	12.5
	12.0	11.1	9.5	12.9	10.5	15.1	11.5	16.0	12.0	16.9	12.5	19.1	12.0	20.9	12.5
	14.0	11.1	9.5	12.9	10.5	15.1	11.5	16.0	12.0	16.9	12.5	19.1	12.0	20.4	12.0
	16.0	11.1	9.5	12.9	10.5	15.1	11.5	16.0	12.0	16.9	12.5	19.1	12.0	20.0	12.0
	18.0	11.1	9.5	12.9	10.5	15.1	11.5	16.0	12.0	16.9	12.5	19.1	12.0	20.0	12.0
	20.0	11.1	9.5	12.9	10.5	15.1	11.5	16.0	12.0	16.9	12.5	19.1	12.0	19.6	11.5
	21.0	11.1	9.5	12.9	10.5	15.1	11.5	16.0	12.0	16.9	12.5	19.1	12.0	19.6	11.5
	23.0	11.1	9.5	12.9	10.5	15.1	11.5	16.0	12.0	16.9	12.5	18.2	11.5	19.1	11.0
	25.0	11.1	9.5	12.9	10.5	15.1	11.5	16.0	12.0	16.9	12.5	18.2	11.5	18.7	11.0
	27.0	11.1	9.5	12.9	10.5	15.1	11.5	16.0	12.0	16.9	12.5	17.8	11.0	18.7	11.0
	29.0	11.1	9.5	12.9	10.5	15.1	11.5	16.0	12.0	16.9	12.5	17.8	11.0	18.2	11.0
	31.0	11.1	9.5	12.9	10.5	15.1	11.5	16.0	12.0	16.9	12.5	18.7	13.0	18.2	11.0
	33.0	11.1	9.5	12.9	10.5	15.1	11.5	16.0	12.0	16.9	12.5	18.7	13.0	17.3	10.5
	35.0	11.1	9.5	12.9	10.5	15.1	11.5	16.0	12.0	16.9	12.5	18.7	13.0	17.3	10.5
	37.0	11.1	9.5	12.9	10.5	15.1	11.5	16.0	12.0	16.4	12.0	16.9	11.5	17.3	10.5
	39.0	11.1	9.5	12.9	10.5	15.1	11.5	16.0	12.0	16.4	12.0	16.9	11.5	16.9	10.5
42.0	11.1	9.5	12.9	10.5	15.1	11.5	16.0	12.0	16.4	12.0	16.9	11.5	16.9	10.5	
44.0	11.1	9.5	12.9	10.5	15.1	11.5	16.0	12.0	16.4	12.0	16.9	11.5	16.9	10.5	
46.0	11.1	9.5	12.9	10.5	15.1	11.5	16.0	12.0	16.4	12.0	16.9	11.5	16.9	10.5	

Abbreviations:

TC: Total capacity

SC: Sensible capacity

Notes:

1. Shaded cells indicate rating condition.

T

6.2 Heating Capacity Table

Table 6.2: Four-way Cassette heating capacity

Capacity (kW)	Outdoor air temperature (°C)		Indoor air temperature (°C DB)					
			16	18	20	21	22	24
	WB	DB	TC	TC	TC	TC	TC	TC
2.8	-20	-19.8	1.79	1.79	1.79	1.79	1.79	1.79
	-19	-18.8	1.92	1.92	1.92	1.92	1.92	1.92
	-17	-16.7	2.02	2.02	2.02	2.02	2.02	2.02
	-15	-14.7	2.02	2.02	2.02	2.02	2.02	2.02
	-13.00	-12.60	2.14	2.14	2.14	2.14	2.14	2.14
	-11.00	-10.50	2.24	2.24	2.24	2.24	2.24	2.24
	-10.00	-9.50	2.34	2.34	2.34	2.34	2.34	2.34
	-9.10	-8.50	2.40	2.40	2.40	2.40	2.40	2.40
	-7.60	-7.00	2.43	2.43	2.43	2.43	2.43	2.43
	-5.60	-5.00	2.53	2.53	2.53	2.53	2.53	2.53
	-3.70	-3.00	2.66	2.66	2.66	2.66	2.66	2.66
	-0.70	0.00	2.85	2.85	2.85	2.85	2.85	2.69
	2.20	3.00	3.01	3.01	3.01	3.01	2.94	2.69
	4.10	5.00	3.10	3.10	3.10	3.10	2.94	2.69
	6.00	7.00	3.20	3.20	3.20	3.10	2.94	2.69
	7.90	9.00	3.30	3.30	3.20	3.10	2.94	2.69
9.80	11.00	3.39	3.39	3.20	3.10	2.94	2.69	
11.80	13.00	3.52	3.46	3.20	3.10	2.94	2.69	
13.70	15.00	3.62	3.46	3.20	3.10	2.94	2.69	
3.6	-20	-19.8	2.24	2.24	2.24	2.24	2.24	2.24
	-19	-18.8	2.40	2.40	2.40	2.40	2.40	2.40
	-17	-16.7	2.52	2.52	2.52	2.52	2.52	2.52
	-15	-14.7	2.60	2.60	2.60	2.60	2.60	2.60
	-13.00	-12.60	2.68	2.68	2.68	2.68	2.68	2.68
	-11.00	-10.50	2.80	2.80	2.80	2.80	2.80	2.80
	-10.00	-9.50	2.92	2.92	2.92	2.92	2.92	2.92
	-9.10	-8.50	3.00	3.00	3.00	3.00	3.00	3.00
	-7.60	-7.00	3.04	3.04	3.04	3.04	3.04	3.04
	-5.60	-5.00	3.16	3.16	3.16	3.16	3.16	3.16
	-3.70	-3.00	3.32	3.32	3.32	3.32	3.32	3.32
	-0.70	0.00	3.56	3.56	3.56	3.56	3.56	3.36
	2.20	3.00	3.76	3.76	3.76	3.76	3.68	3.36
	4.10	5.00	3.88	3.88	3.88	3.88	3.68	3.36
	6.00	7.00	4.00	4.00	4.00	3.88	3.68	3.36
	7.90	9.00	4.12	4.12	4.00	3.88	3.68	3.36
9.80	11.00	4.24	4.24	4.00	3.88	3.68	3.36	
11.80	13.00	4.40	4.32	4.00	3.88	3.68	3.36	
13.70	15.00	4.52	4.32	4.00	3.88	3.68	3.36	

Abbreviations:
TC: Total capacity

Notes:

1. Shaded cells indicate rating condition.

Table continued on next page ...

Table 6.2: Four-way Cassette heating capacity (continued)

Capacity (kW)	Outdoor air temperature (°C)		Indoor air temperature (°C DB)					
			16	18	20	21	22	24
			TC	TC	TC	TC	TC	TC
	WB	DB	kW	kW	kW	kW	kW	kW
4.5	-20	-19.8	2.80	2.80	2.80	2.80	2.80	2.80
	-19	-18.8	3.00	3.00	3.00	3.00	3.00	3.00
	-17	-16.7	3.15	3.15	3.15	3.15	3.15	3.15
	-15	-14.7	3.25	3.25	3.25	3.25	3.25	3.25
	-13.00	-12.60	3.35	3.35	3.35	3.35	3.35	3.35
	-11.00	-10.50	3.50	3.50	3.50	3.50	3.50	3.50
	-10.00	-9.50	3.65	3.65	3.65	3.65	3.65	3.65
	-9.10	-8.50	3.75	3.75	3.75	3.75	3.75	3.75
	-7.60	-7.00	3.80	3.80	3.80	3.80	3.80	3.80
	-5.60	-5.00	3.95	3.95	3.95	3.95	3.95	3.95
	-3.70	-3.00	4.15	4.15	4.15	4.15	4.15	4.15
	-0.70	0.00	4.45	4.45	4.45	4.45	4.45	4.20
	2.20	3.00	4.70	4.70	4.70	4.70	4.60	4.20
	4.10	5.00	4.85	4.85	4.85	4.85	4.60	4.20
	6.00	7.00	5.00	5.00	5.00	4.85	4.60	4.20
	7.90	9.00	5.15	5.15	5.00	4.85	4.60	4.20
	9.80	11.00	5.30	5.30	5.00	4.85	4.60	4.20
11.80	13.00	5.50	5.40	5.00	4.85	4.60	4.20	
13.70	15.00	5.65	5.40	5.00	4.85	4.60	4.20	
5.6	-20	-19.8	3.53	3.53	3.53	3.53	3.53	3.53
	-19	-18.8	3.78	3.78	3.78	3.78	3.78	3.78
	-17	-16.7	3.97	3.97	3.97	3.97	3.97	3.97
	-15	-14.7	4.10	4.10	4.10	4.10	4.10	4.10
	-13.00	-12.60	4.22	4.22	4.22	4.22	4.22	4.22
	-11.00	-10.50	4.41	4.41	4.41	4.41	4.41	4.41
	-10.00	-9.50	4.60	4.60	4.60	4.60	4.60	4.60
	-9.10	-8.50	4.73	4.73	4.73	4.73	4.73	4.73
	-7.60	-7.00	4.79	4.79	4.79	4.79	4.79	4.79
	-5.60	-5.00	4.98	4.98	4.98	4.98	4.98	4.98
	-3.70	-3.00	5.23	5.23	5.23	5.23	5.23	5.23
	-0.70	0.00	5.61	5.61	5.61	5.61	5.61	5.29
	2.20	3.00	5.92	5.92	5.92	5.92	5.80	5.29
	4.10	5.00	6.11	6.11	6.11	6.11	5.80	5.29
	6.00	7.00	6.30	6.30	6.30	6.11	5.80	5.29
	7.90	9.00	6.49	6.49	6.30	6.11	5.80	5.29
	9.80	11.00	6.68	6.68	6.30	6.11	5.80	5.29
11.80	13.00	6.93	6.80	6.30	6.11	5.80	5.29	
13.70	15.00	7.12	6.80	6.30	6.11	5.80	5.29	

Abbreviations:
TC: Total capacity

Notes:

1. Shaded cells indicate rating condition.

Table continued on next page ...

Table 6.2: Four-way Cassette heating capacity (continued)

Capacity (kW)	Outdoor air temperature (°C)		Indoor air temperature (°C DB)					
			16	18	20	21	22	24
			TC	TC	TC	TC	TC	TC
	WB	DB	kW	kW	kW	kW	kW	kW
7.1	-20	-19.8	4.48	4.48	4.48	4.48	4.48	4.48
	-19	-18.8	4.80	4.80	4.80	4.80	4.80	4.80
	-17	-16.7	5.04	5.04	5.04	5.04	5.04	5.04
	-15	-14.7	5.20	5.20	5.20	5.20	5.20	5.20
	-13.00	-12.60	5.36	5.36	5.36	5.36	5.36	5.36
	-11.00	-10.50	5.60	5.60	5.60	5.60	5.60	5.60
	-10.00	-9.50	5.84	5.84	5.84	5.84	5.84	5.84
	-9.10	-8.50	6.00	6.00	6.00	6.00	6.00	6.00
	-7.60	-7.00	6.08	6.08	6.08	6.08	6.08	6.08
	-5.60	-5.00	6.32	6.32	6.32	6.32	6.32	6.32
	-3.70	-3.00	6.64	6.64	6.64	6.64	6.64	6.64
	-0.70	0.00	7.12	7.12	7.12	7.12	7.12	6.72
	2.20	3.00	7.52	7.52	7.52	7.52	7.36	6.72
	4.10	5.00	7.76	7.76	7.76	7.76	7.36	6.72
	6.00	7.00	8.00	8.00	8.00	7.76	7.36	6.72
	7.90	9.00	8.24	8.24	8.00	7.76	7.36	6.72
	9.80	11.00	8.48	8.48	8.00	7.76	7.36	6.72
11.80	13.00	8.80	8.64	8.00	7.76	7.36	6.72	
13.70	15.00	9.04	8.64	8.00	7.76	7.36	6.72	
8.0	-20	-19.8	5.04	5.04	5.04	5.04	5.04	5.04
	-19	-18.8	5.40	5.40	5.40	5.40	5.40	5.40
	-17	-16.7	5.67	5.67	5.67	5.67	5.67	5.67
	-15	-14.7	5.85	5.85	5.85	5.85	5.85	5.85
	-13.00	-12.60	6.03	6.03	6.03	6.03	6.03	6.03
	-11.00	-10.50	6.30	6.30	6.30	6.30	6.30	6.30
	-10.00	-9.50	6.57	6.57	6.57	6.57	6.57	6.57
	-9.10	-8.50	6.75	6.75	6.75	6.75	6.75	6.75
	-7.60	-7.00	6.84	6.84	6.84	6.84	6.84	6.84
	-5.60	-5.00	7.11	7.11	7.11	7.11	7.11	7.11
	-3.70	-3.00	7.47	7.47	7.47	7.47	7.47	7.47
	-0.70	0.00	8.01	8.01	8.01	8.01	8.01	7.56
	2.20	3.00	8.46	8.46	8.46	8.46	8.28	7.56
	4.10	5.00	8.73	8.73	8.73	8.73	8.28	7.56
	6.00	7.00	9.00	9.00	9.00	8.73	8.28	7.56
	7.90	9.00	9.27	9.27	9.00	8.73	8.28	7.56
	9.80	11.00	9.54	9.54	9.00	8.73	8.28	7.56
11.80	13.00	9.90	9.72	9.00	8.73	8.28	7.56	
13.70	15.00	10.17	9.72	9.00	8.73	8.28	7.56	

Abbreviations:
TC: Total capacity

Notes:

1. Shaded cells indicate rating condition.

Table continued on next page ...

Table 6.2: Four-way Cassette heating capacity (continued)

Capacity (kW)	Outdoor air temperature (°C)		Indoor air temperature (°C DB)					
			16	18	20	21	22	24
	WB	DB	TC kW	TC kW	TC kW	TC kW	TC kW	TC kW
9.0	-20	-19.8	5.60	5.04	5.60	5.60	5.60	5.60
	-19	-18.8	6.00	5.40	6.00	6.00	6.00	6.00
	-17	-16.7	6.30	6.30	6.30	6.30	6.30	6.30
	-15	-14.7	6.50	6.50	6.50	6.50	6.50	6.50
	-13.00	-12.60	6.70	6.70	6.70	6.70	6.70	6.70
	-11.00	-10.50	7.00	7.00	7.00	7.00	7.00	7.00
	-10.00	-9.50	7.30	7.30	7.30	7.30	7.30	7.30
	-9.10	-8.50	7.50	7.50	7.50	7.50	7.50	7.50
	-7.60	-7.00	7.60	7.60	7.60	7.60	7.60	7.60
	-5.60	-5.00	7.90	7.90	7.90	7.90	7.90	7.90
	-3.70	-3.00	8.30	8.30	8.30	8.30	8.30	8.30
	-0.70	0.00	8.90	8.90	8.90	8.90	8.90	8.40
	2.20	3.00	9.40	9.40	9.40	9.40	9.20	8.40
	4.10	5.00	9.70	9.70	9.70	9.70	9.20	8.40
	6.00	7.00	10.00	10.00	10.00	9.70	9.20	8.40
	7.90	9.00	10.30	10.30	10.00	9.70	9.20	8.40
	9.80	11.00	10.60	10.60	10.00	9.70	9.20	8.40
11.80	13.00	11.00	10.80	10.00	9.70	9.20	8.40	
13.70	15.00	11.30	10.80	10.00	9.70	9.20	8.40	
10.0	-20	-19.8	6.16	6.16	6.16	6.16	6.16	6.16
	-19	-18.8	6.60	6.60	6.60	6.60	6.60	6.60
	-17	-16.7	6.93	6.93	6.93	6.93	6.93	6.93
	-15	-14.7	7.15	7.15	7.15	7.15	7.15	7.15
	-13.00	-12.60	7.37	7.37	7.37	7.37	7.37	7.37
	-11.00	-10.50	7.70	7.70	7.70	7.70	7.70	7.70
	-10.00	-9.50	8.03	8.03	8.03	8.03	8.03	8.03
	-9.10	-8.50	8.25	8.25	8.25	8.25	8.25	8.25
	-7.60	-7.00	8.36	8.36	8.36	8.36	8.36	8.36
	-5.60	-5.00	8.69	8.69	8.69	8.69	8.69	8.69
	-3.70	-3.00	9.13	9.13	9.13	9.13	9.13	9.13
	-0.70	0.00	9.79	9.79	9.79	9.79	9.79	9.24
	2.20	3.00	10.34	10.34	10.34	10.34	10.12	9.24
	4.10	5.00	10.67	10.67	10.67	10.67	10.12	9.24
	6.00	7.00	11.00	11.00	11.00	10.67	10.12	9.24
	7.90	9.00	11.33	11.33	11.00	10.67	10.12	9.24
	9.80	11.00	11.66	11.66	11.00	10.67	10.12	9.24
11.80	13.00	12.10	11.88	11.00	10.67	10.12	9.24	
13.70	15.00	12.43	11.88	11.00	10.67	10.12	9.24	

Abbreviations:
TC: Total capacity

Notes:

1. Shaded cells indicate rating condition.

Table continued on next page ...

Table 6.2: Four-way Cassette heating capacity (continued)

Capacity (kW)	Outdoor air temperature (°C)		Indoor air temperature (°C DB)					
			16	18	20	21	22	24
	WB	DB	TC	TC	TC	TC	TC	TC
11.2	-20	-19.8	7.00	7.00	7.00	7.00	7.00	7.00
	-19	-18.8	7.50	7.50	7.50	7.50	7.50	7.50
	-17	-16.7	7.88	7.88	7.88	7.88	7.88	7.88
	-15	-14.7	8.13	8.13	8.13	8.13	8.13	8.13
	-13.00	-12.60	8.38	8.38	8.38	8.38	8.38	8.38
	-11.00	-10.50	8.75	8.75	8.75	8.75	8.75	8.75
	-10.00	-9.50	9.13	9.13	9.13	9.13	9.13	9.13
	-9.10	-8.50	9.38	9.38	9.38	9.38	9.38	9.38
	-7.60	-7.00	9.50	9.50	9.50	9.50	9.50	9.50
	-5.60	-5.00	9.88	9.88	9.88	9.88	9.88	9.88
	-3.70	-3.00	10.38	10.38	10.38	10.38	10.38	10.38
	-0.70	0.00	11.13	11.13	11.13	11.13	11.13	10.50
	2.20	3.00	11.75	11.75	11.75	11.75	11.50	10.50
	4.10	5.00	12.13	12.13	12.13	12.13	11.50	10.50
	6.00	7.00	12.50	12.50	12.50	12.13	11.50	10.50
	7.90	9.00	12.88	12.88	12.50	12.13	11.50	10.50
	9.80	11.00	13.25	13.25	12.50	12.13	11.50	10.50
11.80	13.00	13.75	13.50	12.50	12.13	11.50	10.50	
13.70	15.00	14.13	13.50	12.50	12.13	11.50	10.50	
14.0	-20	-19.8	8.96	8.96	8.96	8.96	8.96	8.96
	-19	-18.8	9.60	9.60	9.60	9.60	9.60	9.60
	-17	-16.7	10.08	10.08	10.08	10.08	10.08	10.08
	-15	-14.7	10.40	10.40	10.40	10.40	10.40	10.40
	-13.00	-12.60	11.04	11.04	11.04	11.04	11.04	11.04
	-11.00	-10.50	11.20	11.36	11.36	11.36	11.36	11.36
	-10.00	-9.50	11.68	11.68	11.68	11.68	11.68	11.68
	-9.10	-8.50	12.00	12.00	12.00	12.00	12.00	12.00
	-7.60	-7.00	12.16	12.16	12.16	12.16	12.16	12.16
	-5.60	-5.00	12.64	12.64	12.64	12.64	12.64	12.64
	-3.70	-3.00	13.28	13.28	13.28	13.28	13.28	13.28
	-0.70	0.00	14.24	14.24	14.24	14.24	14.24	13.44
	2.20	3.00	15.04	15.04	15.04	15.04	14.72	13.44
	4.10	5.00	15.52	15.52	15.52	15.52	14.72	13.44
	6.00	7.00	16.00	16.00	16.00	15.52	14.72	13.44
	7.90	9.00	16.48	16.48	16.00	15.52	14.72	13.44
	9.80	11.00	16.96	16.96	16.00	15.52	14.72	13.44
11.80	13.00	17.60	17.28	16.00	15.52	14.72	13.44	
13.70	15.00	18.08	17.28	16.00	15.52	14.72	13.44	

Abbreviations:
TC: Total capacity

Notes:
1. Shaded cells indicate rating condition.

Table continued on next page ...

Table 6.2: Four-way Cassette heating capacity (continued)

Capacity (kW)	Outdoor air temperature (°C)		Indoor air temperature (°C DB)					
			16	18	20	21	22	24
	WB	DB	TC	TC	TC	TC	TC	TC
16.0	-20	-19.8	10.07	10.07	10.07	10.07	10.07	10.07
	-19	-18.8	10.80	10.80	10.80	10.80	10.80	10.80
	-17	-16.7	11.36	11.36	11.36	11.36	11.36	11.36
	-15	-14.7	11.36	11.36	11.36	11.36	11.36	11.36
	-13.00	-12.60	12.04	12.04	12.04	12.04	12.04	12.04
	-11.00	-10.50	12.60	12.60	12.60	12.60	12.60	12.60
	-10.00	-9.50	13.16	13.16	13.16	13.16	13.16	13.16
	-9.10	-8.50	13.50	13.50	13.50	13.50	13.50	13.50
	-7.60	-7.00	13.67	13.67	13.67	13.67	13.67	13.67
	-5.60	-5.00	14.23	14.23	14.23	14.23	14.23	14.23
	-3.70	-3.00	14.96	14.96	14.96	14.96	14.96	14.96
	-0.70	0.00	16.03	16.03	16.03	16.03	16.03	15.13
	2.20	3.00	16.93	16.93	16.93	16.93	16.54	15.13
	4.10	5.00	17.44	17.44	17.44	17.44	16.54	15.13
	6.00	7.00	18.00	18.00	18.00	17.44	16.54	15.13
	7.90	9.00	18.56	18.56	18.00	17.44	16.54	15.13
9.80	11.00	19.07	19.07	18.00	17.44	16.54	15.13	
11.80	13.00	19.80	19.46	18.00	17.44	16.54	15.13	
13.70	15.00	20.36	19.46	18.00	17.44	16.54	15.13	

Abbreviations:
TC: Total capacity

Notes:

1. Shaded cells indicate rating condition.

7 Electrical Characteristics

Table 7.1: Four-way Cassette electrical characteristics

Model name	Power supply						Indoor fan motors	
	Hz	Volts	Min. volts	Max. volts	MCA	MFA	Rated motor output (kW)	FLA
VECR010Q0A-DWV028	50/60	220-240	198	264	0.41	15	0.08	0.33
VECR012Q0A-DWV036	50/60	220-240	198	264	0.41	15	0.08	0.33
VECR015Q0A-DWV045	50/60	220-240	198	264	0.56	15	0.08	0.45
VECR019Q0A-DWV056	50/60	220-240	198	264	0.56	15	0.08	0.45
VECR024Q0A-DWV071	50/60	220-240	198	264	0.56	15	0.08	0.45
VECR027Q0A-DWV080	50/60	220-240	198	264	0.76	15	0.08	0.61
VECR031Q0A-DWV090	50/60	220-240	198	264	0.88	15	0.17	0.70
VECR035Q0A-DWV100	50/60	220-240	198	264	1.00	15	0.17	0.80
VECR038Q0A-DWV112	50/60	220-240	198	264	1.00	15	0.17	0.80
VECR048Q0A-DWV140	50/60	220-240	198	264	1.20	15	0.17	0.96
VECR060Q0A-DWV160	50/60	220-240	198	264	1.26	15	0.09	1.01

Abbreviations:

MCA: Minimum Circuit Amps

MFA: Maximum Fuse Amps

FLA: Full Load Amps

8 Sound Levels

8.1 Overall

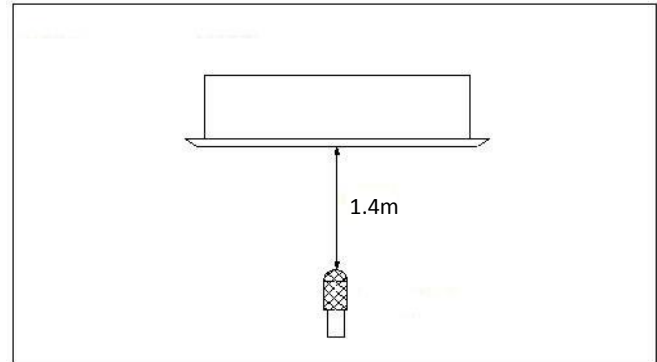
Table 8.1: Four-way Cassette sound pressure levels¹

Model name	Sound pressure levels dB(A)						
	SSH	SH	H	M	L	SL	SSL
VECR010Q0A-DWV028	32	31	30	28	28	26	23
VECR012Q0A-DWV036	32	31	30	28	28	26	23
VECR015Q0A-DWV045	35	34	31	31	30	28	26
VECR019Q0A-DWV056	35	34	31	31	30	28	26
VECR024Q0A-DWV071	35	35	34	31	30	28	27
VECR027Q0A-DWV080	36	35	34	31	31	29	28
VECR031Q0A-DWV090	37	35	34	31	31	30	28
VECR035Q0A-DWV100	43	42	40	38	37	35	34
VECR038Q0A-DWV112	43	42	40	38	37	35	34
VECR048Q0A-DWV140	45	44	42	41	40	39	37
VECR060Q0A-DWV160	46	44	42	41	39	38	37

Notes:

1. Sound pressure levels are measured 1.4m below the unit in a semi-anechoic chamber. During in-situ operation, sound pressure levels may be higher as a result of ambient noise.

Figure 8.1: Four-way Cassette sound pressure level measurement



8.2 Octave Band Levels

Figure 8.2: VECR010(0120Q0A octave band levels

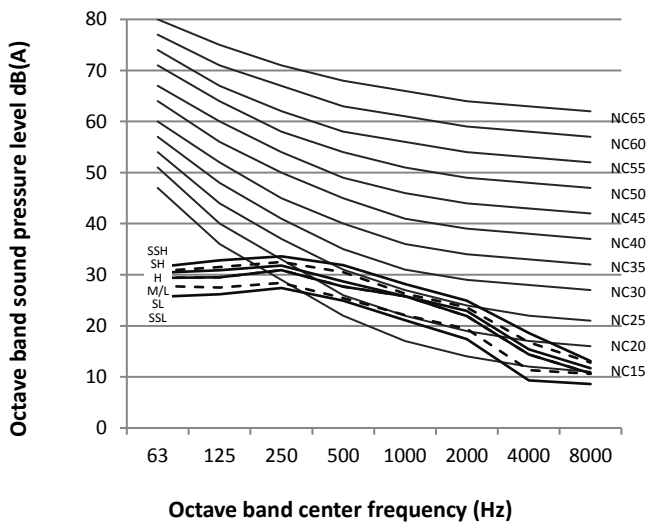


Figure 8.3: VECR015(019)Q0A octave band levels

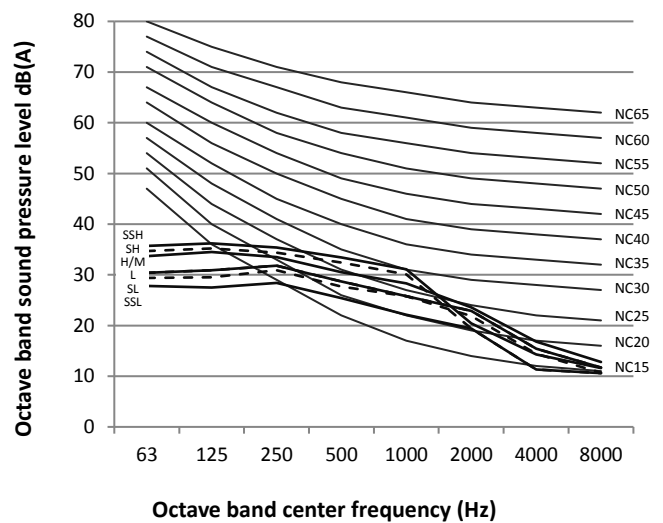


Figure 8.4: VECR024Q0A octave band levels

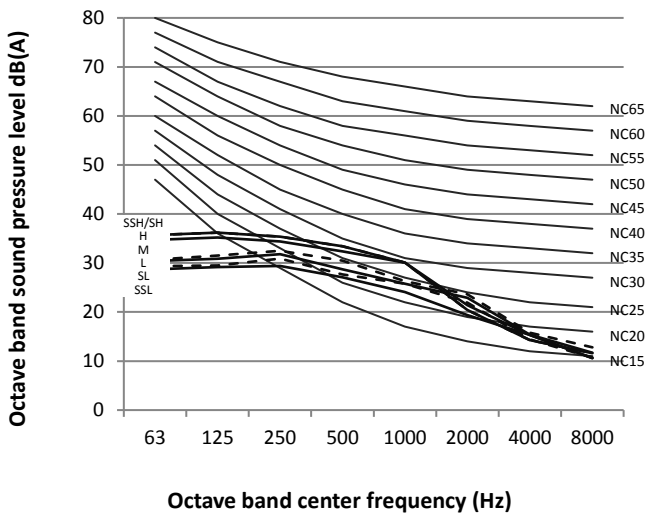


Figure 8.5: VECR027Q0A octave band levels

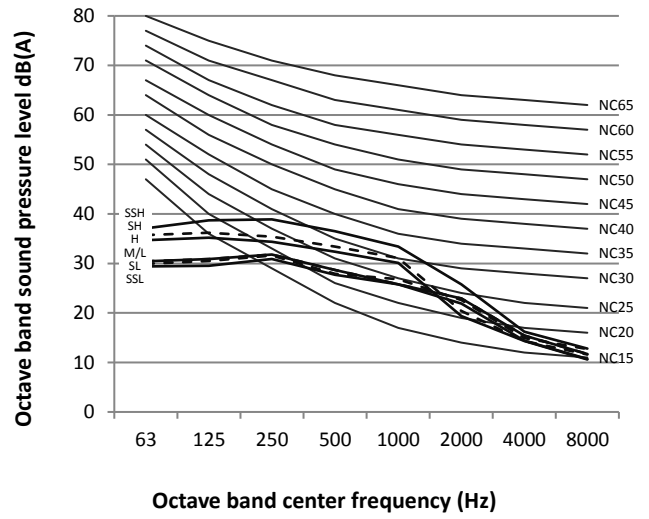


Figure 8.6: VECR031Q0A octave band levels

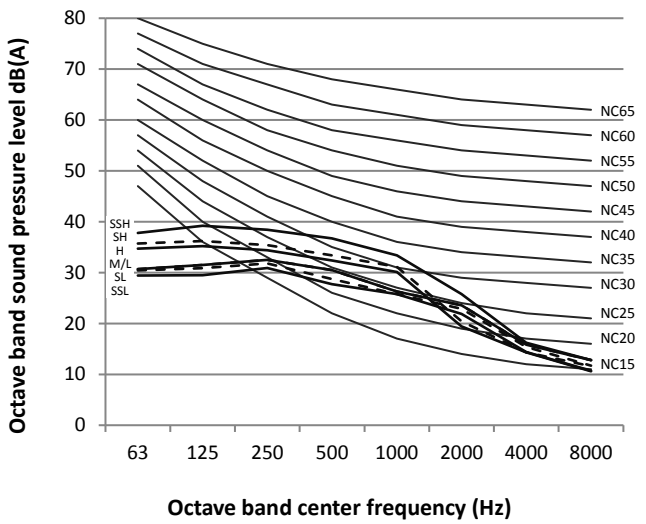


Figure 8.7: VECR035(038)Q0A octave band levels

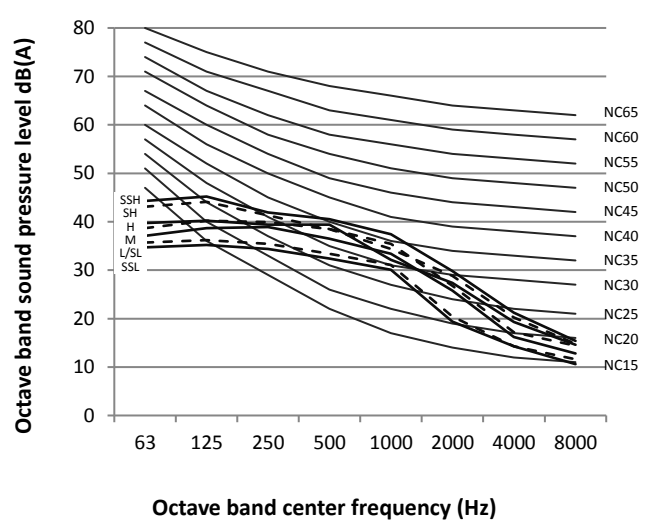


Figure 8.8: VECR048Q0A octave band levels

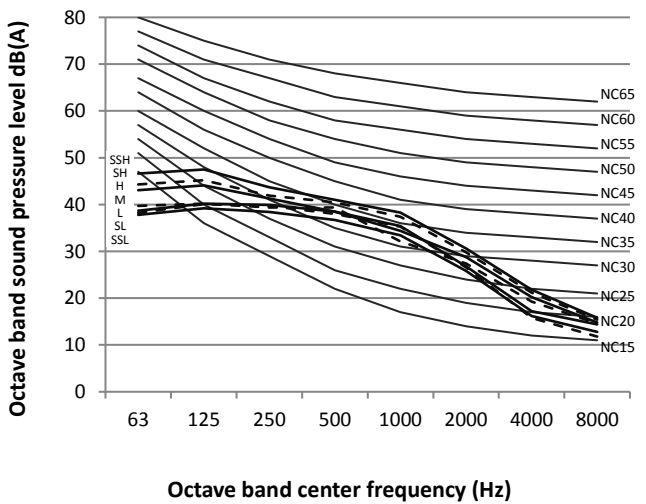
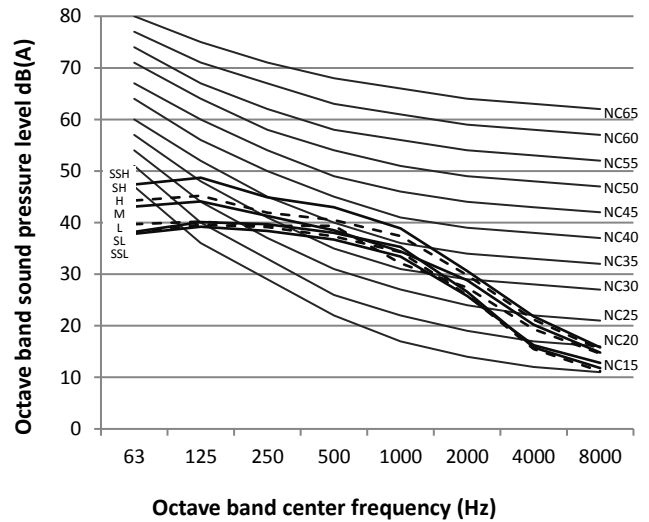


Figure 8.9: VECR060Q0A octave band levels



9 Temperature and Airflow Distributions

9.1 Simulate condition

Table 9.1: Four-way Cassette simulate condition

Model name	Room size (m)	Ceiling height (m)	Flow angle (Cooling/Heating)	Placing
VECR010Q0A-DWV028	6*6	2.7	15° /50°	Center
VECR012Q0A-DWV036	6*6	2.7	15° /50°	Center
VECR015Q0A-DWV045	6*6	2.7	15° /50°	Center
VECR019Q0A-DWV056	8*8	2.7	15° /50°	Center
VECR024Q0A-DWV071	8*8	2.7	15° /50°	Center
VECR027Q0A-DWV080	8*8	2.7	15° /50°	Center
VECR031Q0A-DWV090	10*10	2.7	15° /50°	Center
VECR035Q0A-DWV100	10*10	2.7	15° /50°	Center
VECR038Q0A-DWV112	10*10	2.7	15° /50°	Center
VECR048Q0A-DWV140	10*10	2.7	15° /50°	Center
VECR060Q0A-DWV160	10*10	2.7	15° /50°	Center

Note:

1. These figures and videos are based on software simulation. They show typical temperature and airflow distributions in the conditions above. In the actual installation, they may differ from these figures and videos under the influence of air temperature conditions, ceiling height, cooling/heating load, obstacles, etc.

9.2 Airflow distributions (unit: m/s)

Figure 9.1: VECR010Q0A-DWV028 cooling at 300S

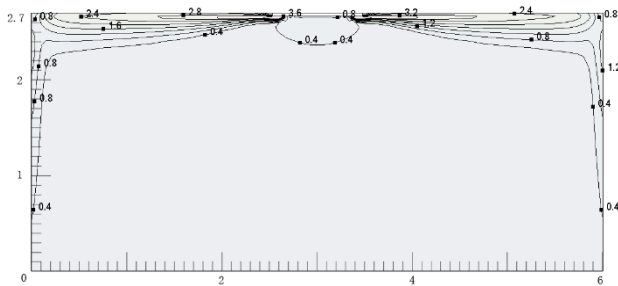


Figure 9.2: VECR010Q0A-DWV028 heating at 300S

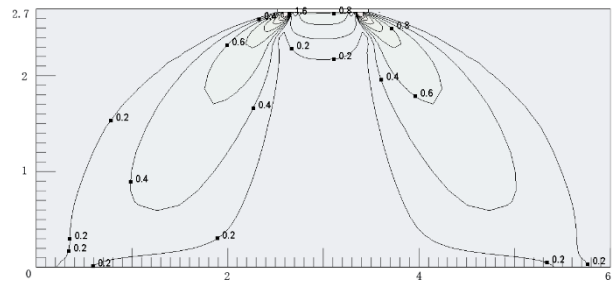


Figure 9.3: VECR012Q0A-DWV036 cooling at 300S

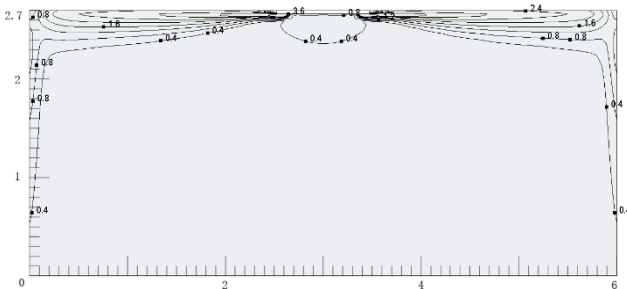


Figure 9.4: VECR012Q0A-DWV036 heating at 300S

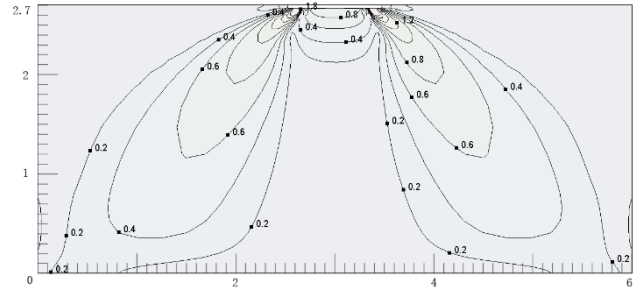


Figure 9.5: VECR015Q0A-DWV045 cooling at 300S

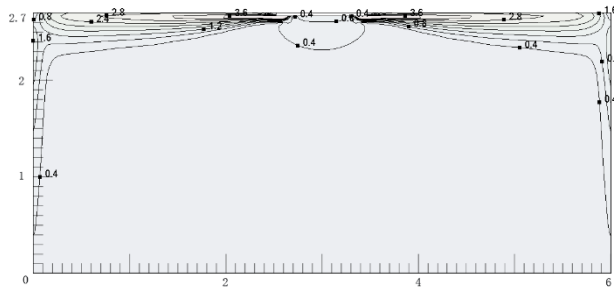


Figure 9.6: VECR015Q0A-DWV045 heating at 300S

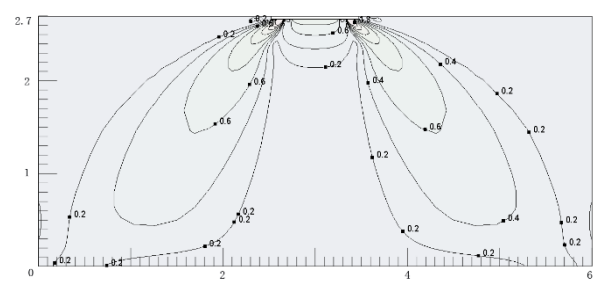


Figure 9.7: VECR019Q0A-DWV056 cooling at 300S

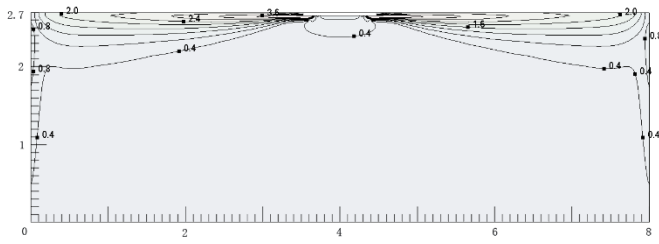


Figure 9.8: VECR019Q0A-DWV056 heating at 300S

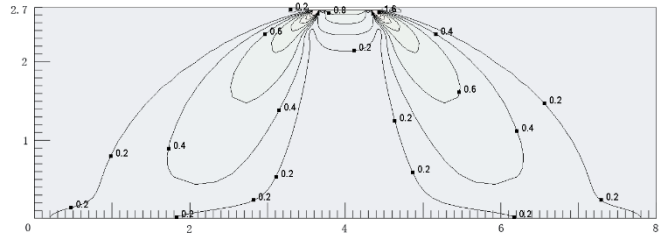


Figure 9.9: VECR024Q0A-DWV071 cooling at 300S

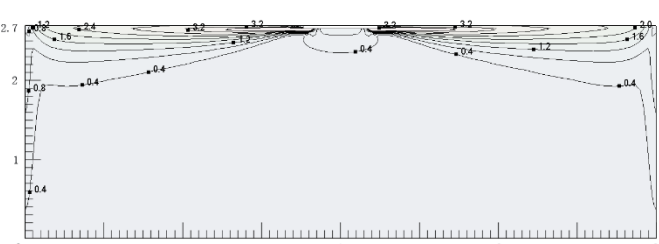


Figure 9.10: VECR024Q0A-DWV071 heating at 300S

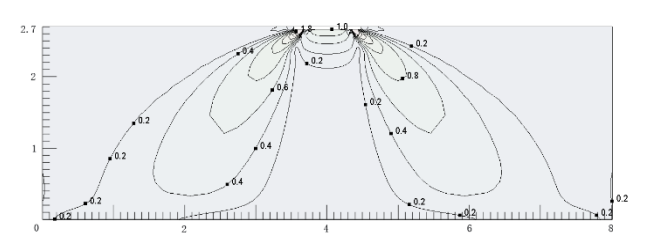


Figure 9.11: VECR027Q0A-DWV080 cooling at 300S

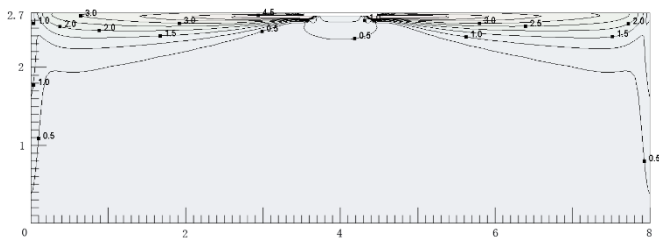


Figure 9.12: VECR027Q0A-DWV080 heating at 300S

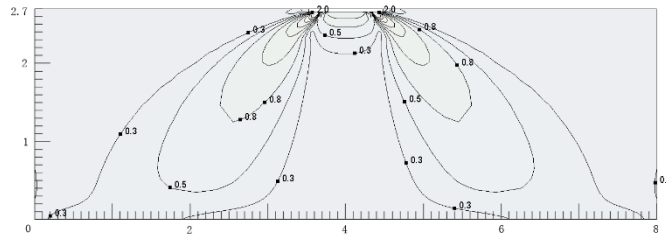


Figure 9.13: VECR031Q0A-DWV090 cooling at 300S

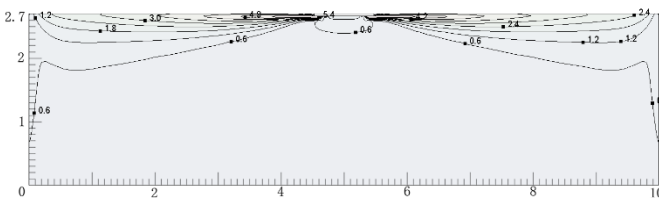


Figure 9.14: VECR031Q0A-DWV090 heating at 300S

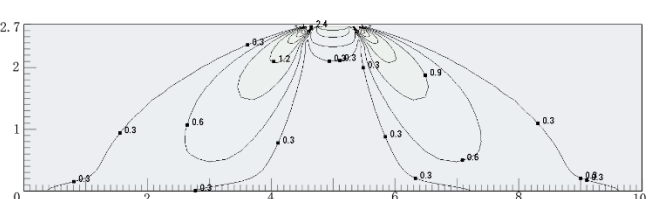


Figure 9.15: VECR035Q0A-DWV100 cooling at 300S

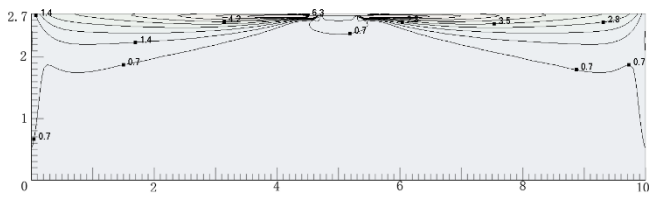


Figure 9.16: VECR035Q0A-DWV100 heating at 300S

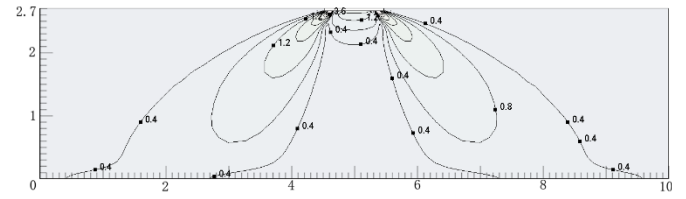


Figure 9.17: VECR038Q0A-DWV112 cooling at 300S

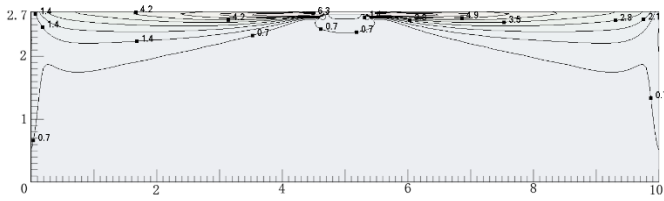


Figure 9.18: VECR038Q0A-DWV112 heating at 300S

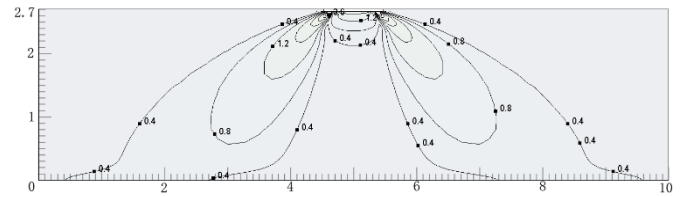


Figure 9.19: VECR048Q0A-DWV140 cooling at 300S

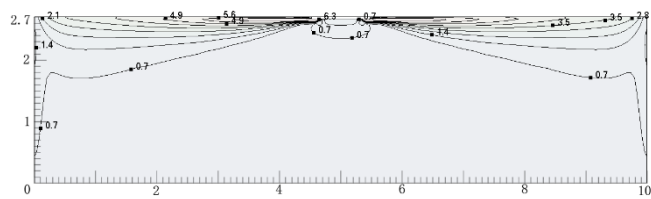


Figure 9.20: VECR048Q0A-DWV140 heating at 300S

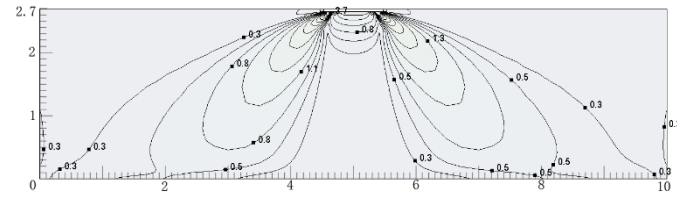


Figure 9.21: VECR060Q0A-DWV160 cooling at 300S

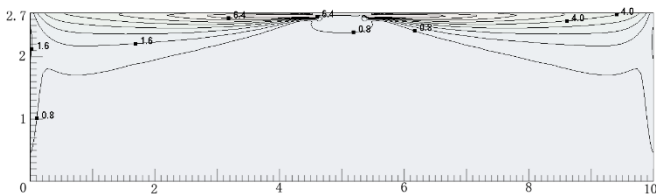
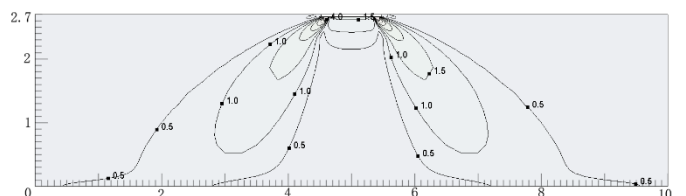


Figure 9.22: VECR060Q0A-DWV160 heating at 300S



9.3 Temperature distributions (unit: °C)

Figure 9.23: VECR010Q0A-DWV028 cooling at 300S

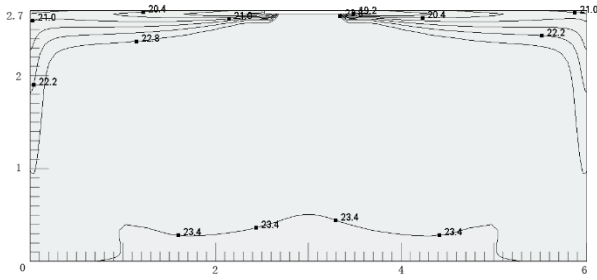


Figure 9.24: VECR010Q0A-DWV028 heating at 300S

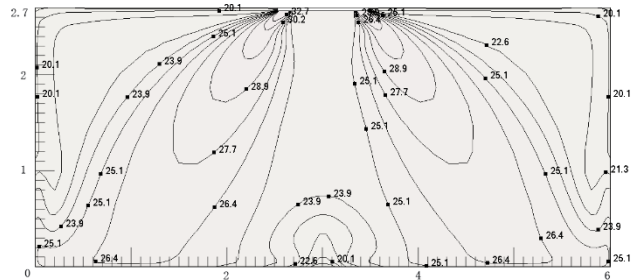


Figure 9.25: VECR012Q0A-DWV036 cooling at 300S

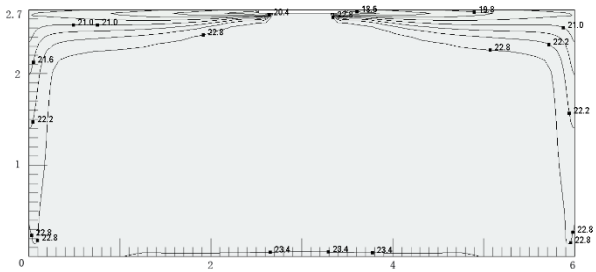


Figure 9.26: VECR012Q0A-DWV036 heating at 300S

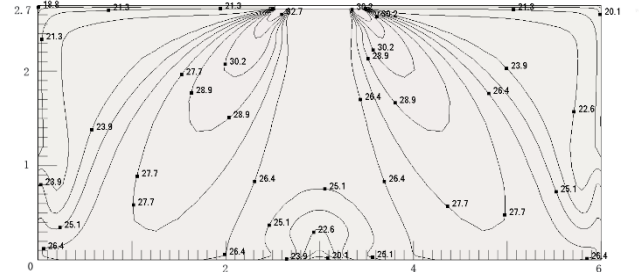


Figure 9.27: VECR015Q0A-DWV045 cooling at 300S

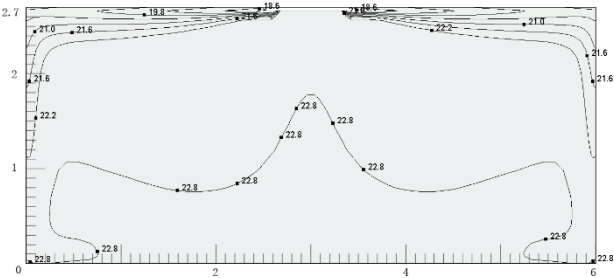


Figure 9.28: VECR015Q0A-DWV045 heating at 300S

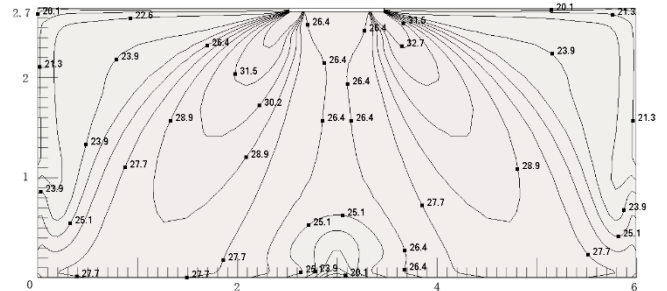


Figure 9.29: VECR019Q0A-DWV056 cooling at 300S

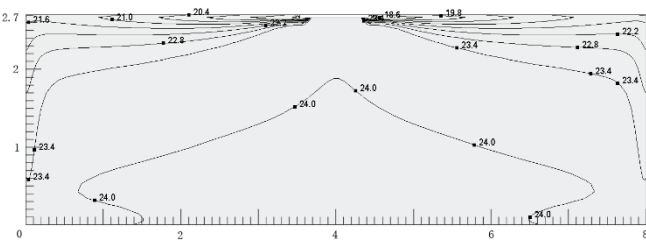
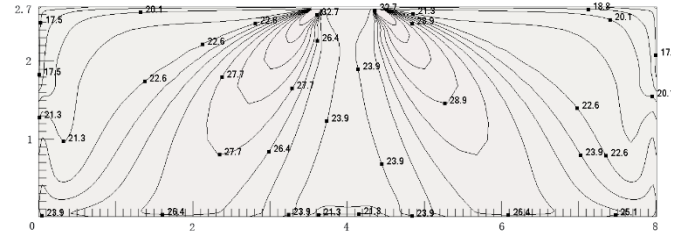


Figure 9.30: VECR019Q0A-DWV056 heating at 300S





OMEGA
ENVIRONMENTAL
TECHNOLOGIES LLC.

17702 Mitchell North, #101
Irvine, CA. 92614 .USA
Tel: 714 795 2830
Fax: 714 966 1646
info@omegavrf.com
www.omegavrf.com

OTECTM
AIR CONDITIONING

Showroom & Technology Center
11380 Interchange Circle North
Miramar, FL 33025 .USA
Tel: 305 901 1270
Fax: 954 212 8280
info@otecomega.com
www.otecomega.com

VECRQ0A-TM1D0123