

# OMEGA VRF TECHNOLOGY

Engineered to elevate efficiency and comfort .....  
..... to the next level!

## MCHM/MCHD SERIES MULTI PIPE INVERTER SYSTEMS Inverter Heat Pump

Cooling Nominal: 18,000 & 60,000 Btuh (5.3 & 17.5 kW)  
Heating Nominal: 19,000 & 60,000 Btuh (5.6 & 17.5 kW)

### Product Features

- ✓ 22 SEER in cooling mode.
- ✓ Up to 9 indoor units per system.
- ✓ Auto Restart.
- ✓ Low Voltage Start Up.
- ✓ Self diagnosis function.
- ✓ Factory tested with full charge.

- ✓ Intelligent defrosting.
- ✓ Centralized controller (Optional).
- ✓ Remote monitoring software (Optional).
- ✓ Excellent comfort solution for residential & small commercial applications.



Multi Connection Outdoor  
2 to 5 Indoor Units



Single Connection Outdoor  
2 to 9 Indoor Units  
with Distribution Module



A Product of  
**OMEGA**  
Environmental  
Technologies LLC.

**ISO 14001 ISO 9001**



### MULTI PIPE VRF SYSTEM (MPV) INDOOR UNITS

APPLICABLE TO ALL MODELS	MODEL NO.	ME --	009P	012P	018P	021P	024P
	Cooling Capacity	Nominal	9,000 (2.6)	12,000 (3.5)	18,000 (5.3)	21,000 (6.1)	24,000 (7.0)
	Btuh (kw)	Minimum	5,118 (1.5)	6,824 (2.0)	7,000 (2.1)	7,165 (2.1)	7,200 (2.1)
		Maximum	11,940 (3.5)	15,000 (4.4)	21,000 (6.2)	27,300 (8.0)	30,000 (8.8)
	Heating Capacity	Nominal	9,000 (2.6)	12,000 (3.5)	18,000 (5.3)	21,000 (6.1)	24,000 (7.0)
	Btuh (kw)	Minimum	5,460 (1.6)	6,150 (1.8)	7,100 (2.1)	7,165 (2.1)	7,200 (2.5)
		Maximum	15,360 (5.5)	16,400 (4.8)	33,000 (9.7)	33,500 (9.8)	34,000 (9.9)
	Efficiency	SEER	Btuh/w (w/w)		16 (4.7)		
	Refrigerant Control	Electronic Expansion Valve @ Outdoor Unit					
	Electrical	Voltage-Phase-Frequency Range	208-230/1/60Hz min 187 - max 253				
Coil Type:	Grooved Copper Tubes - Aluminum Blue Slit Fin						
Controls	LCD Wireless & Wired Remote Control ( 8 m cable Std.)						
Air Filter	Cleanable Cartridge Type						
Refrigerant Connections	Liquid	1/4 (6.35)	1/4 (6.35)	1/4 (6.35)	3/8 (9.52)	3/8 (9.52)	
inches (mm)	Suction	3/8 (9.52)	3/8 (9.52)	1/2 (12.7)	5/8 (15.9)	5/8 (15.9)	
Refrigerant Connection Type	Flare						

DUCTED	MODEL NO.	MESP	009P 2A-RTG028	012P 2A-RTG035	018P 2A-RTG053	021P 2A-RTG062	024P 2A-RTG070
	Fan	Type	Centrifugal				
		Speed	4	4	4	4	4
		Air Flow CFM (m³/hr) - Hi	265 (450)	294 (500)	412 (700)	586 (1000)	586 (1000)
		Noise Level (dba) Hi	37	39	41	42	42
		Motor (Watts)	80	80	100	124	124
	Electrical	FLA	0.28	0.31	0.41	0.50	0.50
	Drain Connections	inches (mm)	1 (25.4)				
	Dimensions	Height	7 7/8 (200)	7 7/8 (200)	7 7/8 (200)	7 7/8 (200)	7 7/8 (200)
	inches (mm)	Width	27 1/2 (700)	27 1/2 (700)	35 1/2 (900)	43 1/3 (1100)	43 1/3 (1100)
	Depth	24 1/4 (615)	24 1/4 (615)	24 1/4 (615)	24 1/4 (615)	24 1/4 (615)	
Net Weight Lbs (kgs)		48.5 (22)	50.7 (23)	59.5 (27)	68.3 (31)	68.3 (31)	

HIGH WALL	MODEL NO.	MEWM	009P 2A-RWG028	012P 2A-RWG035	018P 2A-RWG053	N/A	024P 2A-RWG070
	Fan	Type	Cross Flow Fan				
		Speed	4	4	4		4
		Air Flow CFM (m³/hr) - Hi	330 (560)	341 (580)	500 (850)		588 (1000)
		Noise Level (dba) Hi	47	48	54	N/A	55
		Motor (Watts)	44	44	55		53
	Electrical	FLA	0.20	0.20	0.25		0.24
	Drain Connections	inches (mm)	3/4 (20.0)				
	Dimensions	Height	10 7/8 (275)	10 7/8 (275)	11 3/4 (298)		12 1/2 (315)
	inches (mm)	Width	33 3/8 (848)	33 3/8 (848)	37 (940)	N/A	39 3/5 (1007)
	Depth	7 (180)	7 (180)	7 7/8 (200)		8 5/8 (219)	
Net Weight Lbs (kgs)		22.0 (10)	22.0 (10)	28.7 (13)		35.3 (16)	

FLOOR / CEILING	MODEL NO.	MEFC	009P 2A-RTG028	012P 2A-RTG035	018P 2A-RTG053	N/A	024P 2A-RTG070
	Fan	Type	Centrifugal				
		Speed	4	4	4		4
		Air Flow CFM (m³/hr) - Hi	383 (645)	383 (645)	559 (950)		736 (1250)
		Noise Level (dba) Hi	46	46	50	N/A	54
		Motor (Watts)	55	55	110		145
	Electrical	FLA	0.25	0.25	0.50		0.66
	Drain Connections	inches (mm)	3/4 (20.0)				
	Dimensions	Height	8 7/8 (225)	8 7/8 (225)	8 7/8 (225)		8 7/8 (225)
	inches (mm)	Width	48 (1220)	48 (1220)	48 (1220)	N/A	48 (1220)
	Depth	27 1/2 (700)	27 1/2 (700)	27 1/2 (700)		27 1/2 (700)	
Net Weight Lbs (kgs)		88.2 (40)	88.2 (40)	88.2 (40)		99.2 (45)	

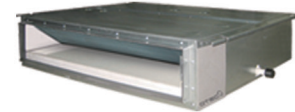
CASSETTE	MODEL NO.	MEC	N/A	M012P 2A-RTG035	M018P 2A-RTG053	N/A	S024P 2A-RTG070
	Fan	Type		Turbo Fan			
		Speed		4	4		4
		Air Flow CFM (m³/hr) - Hi		353 (600)	353 (600)		694 (1180)
		Noise Level (dba) Hi		46	46	N/A	39
		Motor (Watts)		50	50		100
	Electrical	FLA		0.18	0.18		0.43
	Drain Connections	inches (mm)		1 1/4 (31)			
	Panel	Height		2 (50)	2 (50)		2 3/8 (60)
	Dimensions	Width		25 1/2 (650)	25 1/2 (650)		37 1/2 (950)
inches (mm)	Depth		25 1/2 (650)	25 1/2 (650)		37 1/2 (950)	
Net Weight Lbs (kgs)			6.6 (3)	6.6 (3)		15.4 (7)	
Body	Height		9 (230)	9 (230)		9 3/8 (240)	
Dimensions	Width		22 3/8 (570)	22 3/8 (570)	N/A	33 1/8 (840)	
inches (mm)	Depth		22 3/8 (570)	22 3/8 (570)		33 1/8 (840)	
Net Weight Lbs (kgs)			39.6 (18)	39.6 (18)		61.6 (28)	

## MCHM/MCHD SERIES MULTI PIPE VRF SYSTEMS Inverter Heat Pump

Cooling Nominal: 18,000 & 60,000 Btuh (5.3 & 17.5 kW)  
Heating Nominal: 19,000 & 60,000 Btuh (5.6 & 17.5 kW)

### Indoor Unit Features

- ✓ Centralized Controller with weekly timer/clock(Optional).
- ✓ Auto setting for Cooling, Heating, Dehumidifying, Fan.
- ✓ Turbo cooling function with multi-speed fan control.
- ✓ Easy maintenance and cleanable cartridge filters.
- ✓ Easy connect flare connections.
- ✓ Long distance monitoring option.
- ✓ Anti-freezing & anti-high temperature protection.



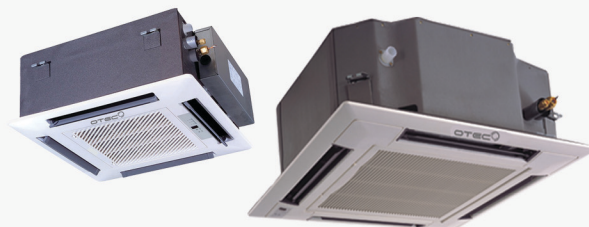
- ✓ Slim Design.
- ✓ Built in Drain Pump.
- ✓ Wireless & Wired LCD Remote Control (Standard).



- ✓ I feel Control.
- ✓ Auto Clean.
- ✓ Wireless & Wired LCD Remote Control (Standard).
- ✓ Wired LCD Remote Control (Optional).



- ✓ Floor & Ceiling installation.
- ✓ Wide Airflow range.
- ✓ Wireless & Wired LCD Remote Control (Standard).



- ✓ Built in Drain Pump.
- ✓ Knockout for fresh air.
- ✓ Wireless & Wired LCD Remote Control (Standard).



## MULTI PIPE VRF SYSTEM (MPV) OUTDOOR UNIT

APPLICABLE TO ALL MODELS	MODEL NO.	MCH -	ALL MODELS	
	Efficiency	SEER	Btuh/w (w/w)	16 (4.7)
	Refrigerant Control	Electronic Expansion Valve @ Outdoor Unit		
	Electrical	Voltage-Phase-Frequency Range		208-230/1/60Hz min 177 - max 253
		Coil Type: Grooved Copper Tubes - Aluminum Blue Slit Fin		
	Compressor Type: Inverter Rotary			
	Refrigerant Connection Type: Flare			

MULTI CONNECTION OUTDOOR UNIT	MODEL NO.	MCHM	020P2 A2-RMG060	030P2 A3-RMG080	035P2 A4-RMG090	040P0 A4-RMG115	045P2 A5-RMG145		
	Maximum No of Indoor Units								
	Maximum Indoor Capacity Connectable Btuh(W)								
	Cooling Capacity Btuh (kw)	Nominal		18,000 (5.3)	27,000 (8.0)	30,000 (8.8)	36,000 (10.0)	41,000 (12.0)	
		Minimum		7,000 (2.1)	7,500 (2.2)	7,500 (2.2)	8,500 (2.5)	8,500 (2.5)	
		Maximum		21,000 (6.2)	33,000 (9.8)	34,000 (10.0)	34,120 (10.0)	46,400 (13.6)	
	Heating Capacity Btuh (kw)	Nominal		19,000 (5.6)	29,000 (8.5)	30,000 (8.8)	36,000 (10.5)	60,000 (17.5)	
		Minimum		8,530 (2.5)	7,500 (2.2)	7,500 (2.2)	10,700 (3.1)	10,700 (3.1)	
		Maximum		22,600 (6.6)	35,000 (10.3)	36,000 (10.5)	41,000 (12.0)	47,800 (14.9)	
	Fan	Type	Axial Flow						
		Speed		3	3	3	3	3	
		Air Flow CFM (m³/hr) - Hi		1530 (2600)	1530 (2600)	1530 (2600)	2177 (3700)	3237 (5500)	
		Noise Level (dbA) - Hi		56	56	56	59	58	
		Motor (Watts)		114	120	120	150	220	
		Fan Motor	FLA		0.54	0.59	0.59	0.68	1.1
			Compressor	RLA		9.6	14.7	14.7	21.0
		Electrical	Cooling Power Input Nominal (W)		1245	2200	2200	2200	3010
			Frequency (Hz)		60	60	60	N/A - 3D	60
			Minimum Circuit Amps (MCA)		13.0	20.0	20.0	28.0	29.0
	Max. Fuse Amps (MFA-MOCP)		20	30	30	45	50		
Refrigerant Connections inches (mm)	Liquid-Suction 1		1/4(6.35)-3/8(9.52)	1/4(6.35)-3/8(9.52)	1/4(6.35)-3/8(9.52)	3/8(9.52)-5/8(15.9)	3/8(9.52)-5/8(15.9)		
	Liquid-Suction 2		1/4(6.35)-3/8(9.52)	1/4(6.35)-3/8(9.52)	1/4(6.35)-3/8(9.52)	1/4(6.35)-1/2(12.7)	1/4(6.35)-1/2(12.7)		
	Liquid-Suction 3		1/4(6.35)-3/8(9.52)	1/4(6.35)-3/8(9.52)	1/4(6.35)-3/8(9.52)	1/4(6.35)-3/8(9.52)	1/4(6.35)-1/2(12.7)		
	Liquid-Suction 4	N/A		N/A	1/4(6.35)-3/8(9.52)	1/4(6.35)-3/8(9.52)	1/4(6.35)-3/8(9.52)		
	Liquid-Suction 5				N/A	N/A	1/4(6.35)-3/8(9.52)		
Refrigerant Charge R410a	Oz. (Kgs)		47.6 (1.4)	77.6 (2.2)	77.6 (2.2)	102.3 (2.9)	169.3 (4.8)		
Dimensions inches (mm)	Height		23 1/2 (596)	27 1/2 (700)	27 1/2 (700)	31 (789)	43 1/2 (1103)		
	Width		35 1/2 (899)	37 1/4 (946)	37 1/4 (946)	36 1/4 (920)	28 (1015)		
	Depth		14 7/8 (378)	15 1/2 (396)	15 1/2 (396)	16 3/4 (427)	17 1/4 (440)		
Net Weight Lbs (kgs)			94.6 (43)	134.2 (61)	136.7 (62)	152.5 (69)	225 (102)		

SINGLE CONNECTION OUTDOOR UNIT	MODEL NO.	MCHD	050P0 A8-RLG150	060P0 A9-RLG175		
	Maximum No of Indoor Units					
	Maximum Indoor Capacity Connectable Btuh(W)					
	Cooling Capacity Btuh (kw)	Nominal		48,000 (14.1)	60,000 (17.5)	
		Minimum		3,410 (1.0)	3,410 (1.0)	
		Maximum		54,600 (16.0)	61,400 (18.0)	
	Heating Capacity Btuh (kw)	Nominal		48,000 (14.1)	60,000 (17.5)	
		Minimum		4,100 (1.2)	4,100 (1.2)	
		Maximum		58,000 (17.0)	63,100 (18.5)	
	Fan	Type	Axial Flow			
		Speed		3	3	
		Air Flow CFM (m³/hr) - Hi		3766 (6400)	4120 (7000)	
		Noise Level (dbA) - Hi		57	57	
		Motor (Watts)		150	150	
		Fan Motor	FLA		0.68	0.68
			Compressor	RLA		21
	Electrical	Cooling Power Input Nominal (W)		4580	4580	
Frequency (Hz)		N/A - 3D				
Minimum Circuit Amps (MCA)		27.0	27.0			
Max. Fuse Amps (MFA-MOCP)		45	45			
Refrigerant Connections inches (mm)	Liquid		3/8 (9.52)	3/8 (9.52)		
	Suction		5/8 (15.9)	5/8 (15.9)		
Refrigerant Charge R410a	Oz. (Kgs)		174.6 (4.9)	174.6 (4.9)		
Dimensions inches (mm)	Height		53 1/7 (1350)	53 1/7 (1350)		
	Width		35 3/7 (900)	35 3/7 (900)		
	Depth		14 3/4 (375)	14 3/4 (375)		
Net Weight Lbs (kgs)			255.8 (116)	255.8 (116)		

DISTRIBUTION MODULE	MODEL NO.	MADM	002P0 AF-R01	003P0 AF-R01	005P0 AF-R01	NOTES	
	Maximum No of Indoor Units						
	Noise Level (dbA) - Hi						
	Refrigerant Connections to Outdoor Units inches (mm)	Liquid		3/8 (10)	3/8 (10)	3/8 (10)	<b>MCHM Multi Connection:</b> 1. Outdoor units with 2 to 5 pipe connections. 2. Max. 25m. distance from outdoor to farthest indoor unit. 3. Max. 80m. Total pipe length for all indoor units.
		Suction		5/8 (15.9)	5/8 (15.9)	5/8 (15.9)	
	Drain Connections inches (mm)			1 1/4 (31)			
	Refrigerant Connections to Indoor Units inches (mm)	Liquid		1/4 (6.35)	1/4 (6.35)	1/4 (6.35)	
		Suction		3/8 (9.52)	3/8 (9.52)	3/8 (9.52)	
	Electrical	Voltage-Phase-Amps		208/230-1			
				0.02	0.03	0.05	
Body Dimensions inches (mm)	Height		7 1/4 (182)	7 1/4 (182)	7 1/2 (193)		
	Width		17 1/4 (439)	17 1/4 (439)	18 1/4 (463)		
	Depth		12 1/3 (313)	12 1/3 (313)	13 1/3 (338)		
Net Weight Lbs (kgs)			12.8 (5.8)	14.3 (6.5)	19.8 (9)		

## MCHM/MCHD SERIES MULTI PIPE VRF SYSTEMS Inverter Heat Pump

Cooling Nominal: 18,000 & 60,000 Btuh (5.3 & 17.5 kW)  
 Heating Nominal: 19,000 & 60,000 Btuh (5.6 & 17.5 kW)

### Outdoor Unit Features

- ✓ DC Inverter rotary compressor.
- ✓ Electronic expansion valve.
- ✓ Super quiet operation.
- ✓ Corrosion resisting cabinet with protective coating.
- ✓ High & low pressure protection.
- ✓ Discharge temperature protection.
- ✓ Phase loss & overcurrent protection.
- ✓ Self-Diagnostics.



✓ MCHM 020-035

✓ MCHM 040



✓ MCHM 045



✓ MCHD 050-060



Standard Wireless Controller



Standard Wired Controller



✓ MADM 002



✓ MADM 003



✓ MADM 005



# OMEGA VRF TECHNOLOGY

Engineered to elevate efficiency and comfort .....  
..... to the next level!

## MULTI PIPE OUTDOOR UNIT MODELS with INDOOR Unit Capacity Combinations ( 000 Btuh )

MULTI CONNECTION OUTDOOR	MCHM020P2A2		MCHM030P2A3				MCHM035P2A4				
	4- COMBINATIONS		11- COMBINATIONS				16- COMBINATIONS				
	1 UNIT	2 UNITS	2 UNITS		3 UNITS		2 UNITS		3 UNITS		4 UNITS
	9 (2x9)	(2x9)	(2x9)	(2x18)	(3x9)	9+(2x12)	(2x9)	9+12	(3x9)	(2x9)+12	(3x12)
12	9+12	9+18	9+12	(2x9)+12	(2x9)+18	9+18	(2x12)	9+(2x12)	9+12+18	(2x9)+18	(3x9)+12
		12+18	(2x12)	(3x12)		12+18	(2x18)	(2x12)+18			(2x9)+(2x12)

MULTI CONNECTION OUTDOOR	MCHM040P9A4				MCHM045P2A5						
	47- COMBINATIONS				86- COMBINATIONS						
	2 UNITS	3 UNITS		4 UNITS	2 UNITS	3 UNITS		4 UNITS		5 UNITS	
	9+12	(3x9)	9+18+21	(4x9)	9+12	(3x9)	9+18+21	12+18+21	(4x9)	9+(2x12)+18	(5x9)
9+18	(3x9)+12	9+18+24	(3x9)+12	9+18	(2x9)+12	9+18+24	12+18+24	(3x9)+12	9+(2x12)+21	(4x9)+12	(2x9)+(3x12)
9+21	(2x9)+18	9+(2x21)	(3x9)+18	9+21	(2x9)+18	9+(3x21)	12+(2x21)	(3x9)+18	9+(2x12)+24	(4x9)+18	(2x9)+(2x12)+18
9+24	(2x9)+21	(3x12)	(3x9)+21	9+24	(2x9)+21	9+21+24	12+21+24	(3x9)+21	9+(2x12)+24	(4x9)+21	(2x9)+(3x12)+21
(2x12)	(2x9)+24	(2x12)+18	(3x9)+24	(2x12)	(2x9)+24	9+(2x24)	12+(2x24)	(3x9)+24	9+12+18+21	(4x9)+24	9+(4x12)
12+18	9+(2x12)	(2x12)+21	(2x9)+(2x12)	12+18	9+(2x12)	(3x12)	(3x18)	(2x9)+(2x12)	9+12+(2x21)	(3x9)+(2x12)	9+(3x12)+18
12+21	9+12+18	(2x12)+24	(2x9)+12+18	12+21	9+12+18	(2x12)+18	(2x18)+24	(2x9)+12+18	9+(3x18)	(3x9)+12+18	(5x12)
12+24	9+12+21	12+(2x18)	(2x9)+12+21	12+24	9+12+21	(2x12)+21	12+(2x18)+24	(2x9)+12+21	(4x12)	(3x9)+12+21	
(2x18)	9+12+24	12+18+21	(2x9)+(2x18)	(2x18)	9+12+24	(2x12)+24	18+(2x21)	(2x9)+12+24	(3x12)+18		
18+21	9+(3x12)	(3x18)	9+(3x12)	18+21	9+(2x18)	12+(2x18)	(3x21)	(2x9)+(2x18)	(3x12)+21		
18+24			9+(4x12)+18	18+24				(2x9)+18+21	(3x12)+24		
(2x21)			(4x12)					(2x9)+18+24	(2x12)+(2x18)		
21+24				21+24				(2x9)+(2x21)	(2x12)+18+21		
(2x24)				(2x24)				9+(3x12)			

SINGLE CONNECTION OUTDOOR	MCHD050A8 ( + MADM Module )									
	142- COMBINATIONS									
	2 UNITS	3 UNITS		4 UNITS		5 UNITS		6 UNITS	7 UNITS	
	9+18	(3x9)	9+(2x21)	12+(2x24)	(4x9)	9+(3x12)	9+18+21+24	(5x9)	(3x9)+18+24	9+(4x12)
9+21	(2x9)+12	9+21+24	(3x18)	(3x9)+12	9+(2x12)+18	(4x12)	(4x9)+12	(3x9)+(2x21)	9+(3x12)+18	(5x9)+12
9+24	(2x9)+18	9+(2x24)	(2x18)+21	(3x9)+18	9+(2x12)+21	(3x12)+18	(4x9)+18	(3x9)+21+24	9+(3x12)+21	(5x9)+18
(2x12)	(2x9)+21	(3x12)	(2x18)+24	(3x9)+21	9+(2x12)+24	(4x21)	(4x9)+21	(2x9)+(3x12)	9+(3x12)+24	(5x9)+21
12+18	(2x9)+24	(2x12)+18	18+(2x21)	(3x9)+24	9+12+(2x18)	(3x12)+24	(4x9)+24	(2x9)+(2x12)+18	9+(2x12)+(2x18)	(5x9)+24
12+21	9+(2x12)	(2x12)+21	18+21+24	(2x9)+(2x12)	9+12+18+21	(2x12)+(2x18)	(3x9)+(2x12)	(2x9)+(2x12)+21	9+(2x12)+18+21	(4x9)+(2x12)
12+24	9+12+18	(2x12)+24	(2x21)+21	(2x9)+12+18	9+12+18+24	(2x12)+18+21	(3x9)+12+18	(2x9)+(2x12)+24	(5x12)	(4x9)+12+18
(2x18)	9+12+21	12+(2x18)	(2x21)+24	(2x9)+12+21	9+12+(2x21)	(2x12)+18+24	(3x9)+12+21	(2x9)+12+(2x18)	(4x12)+18	(4x9)+12+21
18+21	9+12+24	12+18+21	21+(2x24)	(2x9)+12+24	9+12+21+24	(2x12)+21+21	(3x9)+12+24	(2x9)+12+18+21	(2x12)+21	(4x9)+12+24
18+24	9+(2x18)	12+18+24	(3x24)	(2x9)+(2x18)	9+12+(2x24)	(2x12)+24+24	(3x9)+(2x18)	(2x9)+12+18+24	(4x12)+24	(3x9)+(3x12)
(2x21)	9+18+21	12+(2x21)		(2x9)+18+21	9+(3x18)	12+(3x18)	(3x9)+18+21	(2x9)+12+(2x21)	(3x12)+(2x18)	(3x9)+(2x12)+18
21+24	9+18+24	12+21+24		(2x9)+18+24	9+(2x18)+21	12+(2x18)+21				(3x9)+(2x12)+21
(2x24)				(2x9)+(2x21)	9+(2x18)+24	12+(2x18)+24				(2x9)+(4x12)
				(2x9)+21+24	9+18+(2x21)	12+18+(2x21)				(2x9)+(3x12)+18

SINGLE CONNECTION OUTDOOR	MCHD060A9 ( + MADM Module )										
	215- COMBINATIONS										
	2 UNITS	3 UNITS		4 UNITS		5 UNITS		6 UNITS		7 UNITS	8 UNITS
	9+18	(2x9)+12	(2x12)+24	(4x9)	9+12+18+21	(2x12)+18+21	(5x9)	(2x9)+(2x18)+21	(6x9)	(3x9)+12+(2x18)	(7x9)
9+21	9+18	12+(2x18)	(3x9)+12	9+12+18+24	(2x12)+18+24	(4x9)+12	(2x9)+(2x18)+24	(5x9)+12	(3x9)+12+18+21	(6x9)+12	(7x9)+12
9+24	(2x9)+21	12+18+21	(3x9)+18	9+12+(2x21)	(2x12)+(2x21)	(4x9)+18	(2x9)+18+(2x21)	(5x9)+18	(3x9)+12+18+24	(6x9)+18	(7x9)+18
12+18	(2x9)+24	12+18+24	(3x9)+21	9+12+21+24	(2x12)+21+24	(4x9)+21	(2x9)+18+21+24	(5x9)+21	(3x9)+12+(2x21)	(6x9)+21	(6x9)+(2x12)
12+21	9+(2x12)	12+(2x21)	(3x9)+24	9+12+(2x24)	(2x12)+(2x24)	(4x9)+24	9+(4x12)	(5x9)+24	(2x9)+(4x12)	(6x9)+24	(5x9)+(3x12)
12+24	9+12+18	12+21+24	(2x9)+(2x12)	9+(3x18)	12+(3x18)	(3x9)+(2x12)	9+(3x12)+18	(4x9)+(2x12)	(2x9)+(3x12)+18	(5x9)+(2x12)	
(2x18)	9+12+21	12+(2x24)	(2x9)+12+18	9+(2x18)+21	12+(2x18)+21	(3x9)+12+18	9+(3x12)+21	(4x9)+12+18	(2x9)+(2x12)+12+	(5x9)+12+18	
18+21	9+12+24	(3x18)	(2x9)+12+21	9+(2x18)+24	12+(2x18)+24	(3x9)+12+21	9+(3x12)+24	(4x9)+12+21	(2x9)+(2x12)+12+	(5x9)+12+21	(9x9)
18+24	9+(2x18)	(2x18)+21	(2x9)+12+24	9+18+(2x21)	12+18+(2x21)	(3x9)+12+24	9+(2x12)+(2x18)	(4x9)+12+24	(2x9)+(2x12)+2x	(5x9)+12+24	
(2x21)	9+18+21	(2x18)+24	(2x9)+(2x18)	9+18+21+24	12+18+21+24	(3x9)+(2x18)	9+(2x12)+18+21	(4x9)+(2x18)	(2x9)+(2x12)+18+	(5x9)+(2x18)	
21+24	9+18+24	18+(2x21)	(2x9)+18+21	9+18+(2x24)	12+18+(2x24)	(3x9)+18+21	9+(2x12)+18+24	(4x9)+18+21	9+(5x12)	(4x9)+(3x12)	
(2x24)	9+(3x21)	18+21+24	(2x9)+18+24	9+(3x21)	12+(3x21)	(3x9)+18+24	9+(2x12)+(2x21)	(4x9)+18+24	9+(4x12)+18	(4x9)+(2x12)+18	
	9+21+24	18+(2x24)	(2x9)+(2x21)	9+(2x21)+24	12+(2x21)+24	(3x9)+(2x21)	9+(2x12)+21+24	(4x9)+(2x21)	9+(4x12)+21	(4x9)+(2x12)+21	
	9+(2x24)	(3x21)	(2x9)+21+24	9+21+(2x24)	12+21+(2x24)	(3x9)+21+24	9+(2x12)+(2x24)	(4x9)+21+24	9+(4x12)+24	(3x9)+(4x12)	
	(3x12)	(3x21)+24	(2x9)+(2x24)	9+(3x24)	(4x18)	(2x9)+(3x12)	(5x12)	(3x9)+(2x12)+12	9+(3x12)+(2x18)	(3x9)+(3x12)+18	
	(2x12)+18	21+(2x24)	9+(3x12)	(4x12)	(3x18)+21	(2x9)+(2x12)+18	(4x12)+18	(3x9)+(2x12)+18	(6x12)	(2x9)+(5x12)	
	(2x12)+21	(3x24)	9+(2x12)+18	(3x12)+18	(3x18)+24	(2x9)+(2x12)+21	(4x12)+21	(3x9)+(2x12)+21	(5x12)+18	9+(6x12)	
			9+(2x12)+21	(3x12)+21	(2x18)+(2x21)	(2x9)+(2x12)+24	(4x12)+24	(3x9)+(2x12)+24	(5x12)+21		
			9+(2x12)+24	(3x12)+24	(2x18)+21+24	(2x9)+12+(2x18)	(3x12)+(2x18)				
			9+12+(2x18)	(2x12)+(2x18)	18+(2x21)	(2x9)+12+18+21	(3x12)+18+21				
						(2x9)+12+18+24	(3x12)+18+24				
						(2x9)+12+(2x21)	(3x12)+(2x21)				
						(2x9)+12+21+24	(3x12)+21+24				
						(2x9)+12+(2x24)	(2x12)+(3x18)				
						(2x9)+(3x18)	(2x12)+(2x18)+21				

- Notes:**
- Nominal capacities are based on ARI standards 210/240-89, air entering the indoor coil operating at high fan speed for 220V-240V setting. Cooling: 80/67° F (27/19° C) DB/WB indoor & 95° F (35° C) outdoor ambient temperature.
  - Ratings are based on indoor and outdoor connected by 25ft (7.5m) of tubing.
  - Refrigerant metering device is installed at the outdoor unit as standard.
  - Flare fittings are provided for connecting indoor and outdoor units.
  - Insulation of both liquid and suction line is required.
  - Outdoor units are shipped with full operating charge.
  - For details of model number nomenclature, please refer to publication OMGNM-0115.

**OMEGA**  
ENVIRONMENTAL  
TECHNOLOGIES LLC.

17702 Mitchell North, #101  
Irvine, CA 92614, USA  
Tel: 714 795 2830  
Fax: 714 966 1649  
info@omegainverter.com  
www.omegainverter.com



**OTEC**  
AIR CONDITIONING

Showroom & Technology Center  
11380 Interchange Circle North  
Miramar, FL 33025 USA  
Tel: 305 731 2140, 888 840 7550  
Fax: 954 212 8280  
info@otecus.com  
www.otecus.com

**ISO 14001 ISO 9001**